

Cycloheximide

Cat# C3171 - 1 mg

Storage at 2-8°C. Avoid light.

INFORMATION

CAS: 66-81-9

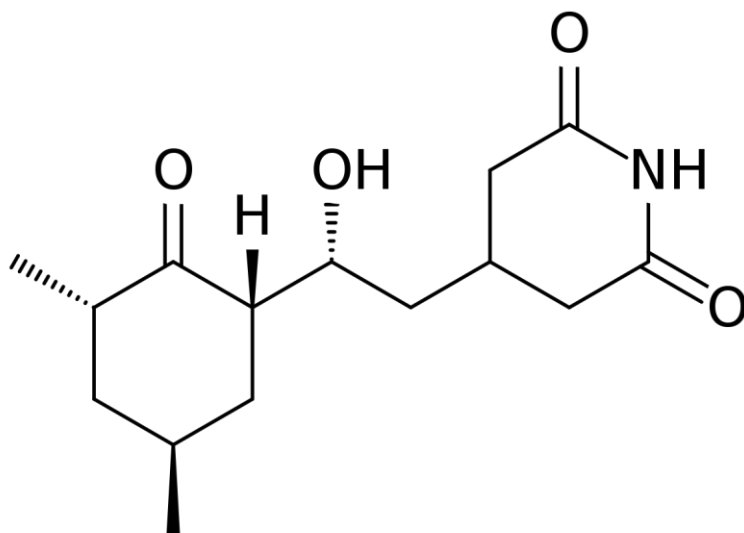
M.W.: 281.35

Formula: C₁₂H₂₃NO₄

Appearance: White powder

Solubility: Soluble in water (20 mg/ml), ethanol, Chloroform, and Ether.

CHEMICAL STRUCTURE



PRODUCT USE LIMITATION

These products are intended for research use only.