

# Bax mouse Monoclonal Antibody(6F11)

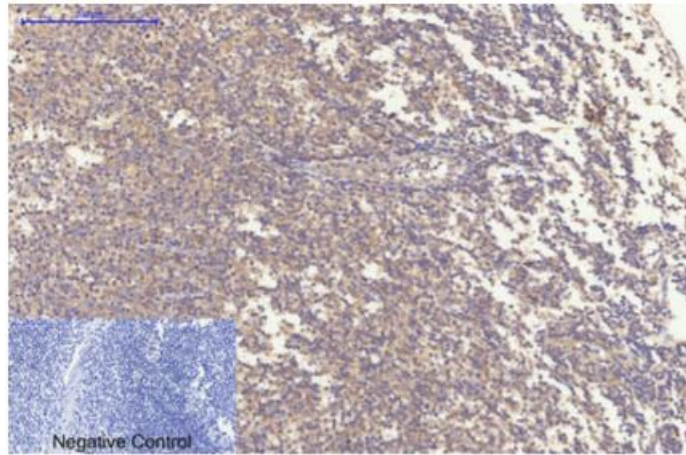
Cat# A20245PI- 20/50/100 ug

Storage at -20 °C

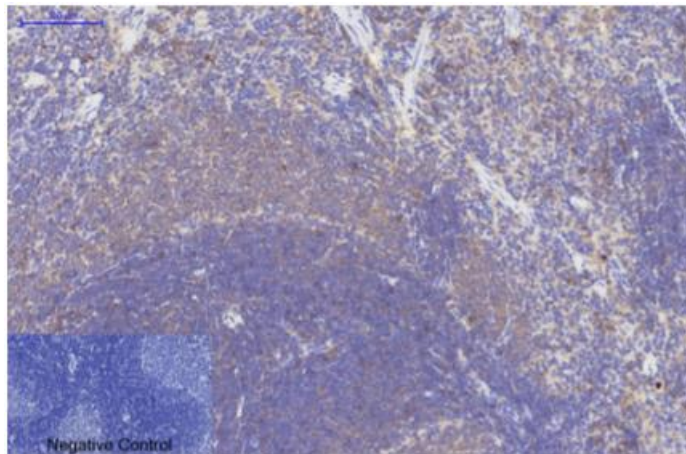
## INFORMATION

<b>Product Name</b>	Bax mouse Monoclonal Antibody(6F11)
<b>Cat. No.</b>	A20245PI
<b>Product type</b>	Primary antibodies
<b>Species reactivity</b>	Human, Mouse, Rat, Chicken
<b>Clonality</b>	monoclonal
<b>Host</b>	Mouse
<b>Size</b>	50 ug/100 ug
<b>Uniprot</b>	Human: Q07812
<b>Gene name</b>	BAX
<b>Protein name</b>	BAX
<b>Immunogen</b>	Synthetic Peptide of Bax at AA range of 30-110
<b>Specificity</b>	Bax protein detects endogenous levels of BAX
<b>Concentration</b>	1 mg/ml
<b>Tested applications</b>	WB, IHC-p, IF
<b>Application</b>	WB : 1:1000-1:2000/IHC-p : 1:100-1:200/IF : 1:50-1:200
<b>Conjugation</b>	None
<b>Purification</b>	Affinity purified
<b>Molecular Weight</b>	20 kDa
<b>Stock buffer</b>	Liquid in PBS containing 50% glycerol, 0.5% BSA and 0.02% sodium azide
<b>Storage instruction</b>	Store at -20°C or -80°C for 1 year. Avoid repeated freeze/thaw cycles.
<b>Alias</b>	BAX

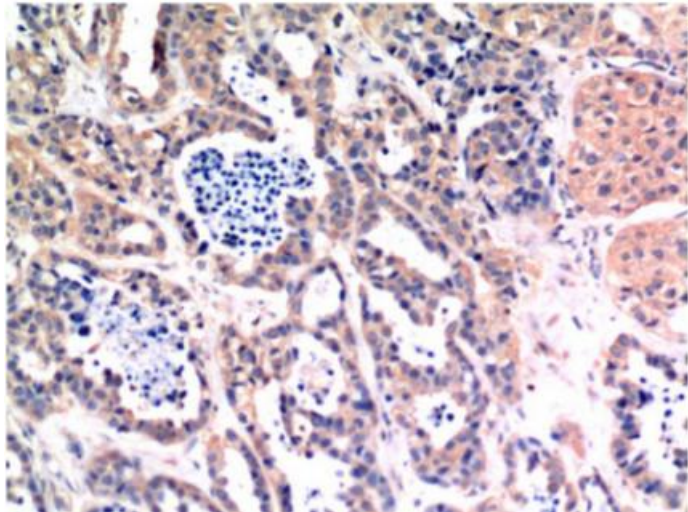
**Image**



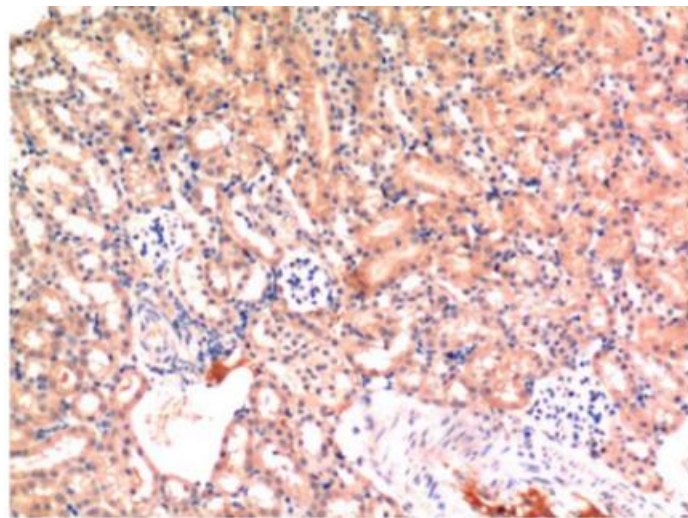
- ♦ Immunohistochemical analysis of paraffin-embedded Human-Tonsil tissue. 1, Bax Mouse Monoclonal Antibody(6F11) was diluted at 1:200(4°C, overnight). 2, Sodium citrate pH 6.0 was used for antibody retrieval(>98°C, 20min). 3, Secondary antibody was diluted at 1:200(room temperature, 30min). Negative control was used by secondary antibody only.



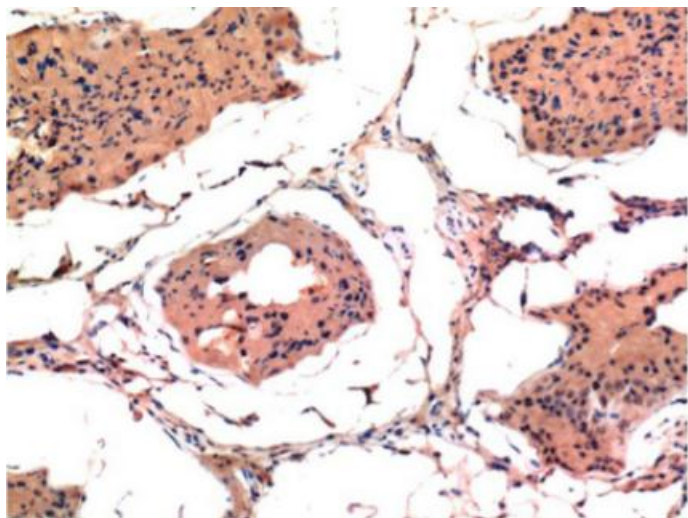
- ♦ Immunohistochemical analysis of paraffin-embedded Rat-spleen tissue. 1, Bax Mouse Monoclonal Antibody(6F11) was diluted at 1:200(4°C, overnight). 2, Sodium citrate pH 6.0 was used for antibody retrieval(>98°C, 20min). 3, Secondary antibody was diluted at 1:200(room temperature, 30min). Negative control was used by secondary antibody only.



- ◆ Immunohistochemical analysis of paraffin-embedded Human Breast Carcinoma Tissue using Bax Mouse mAb diluted at 1:200.

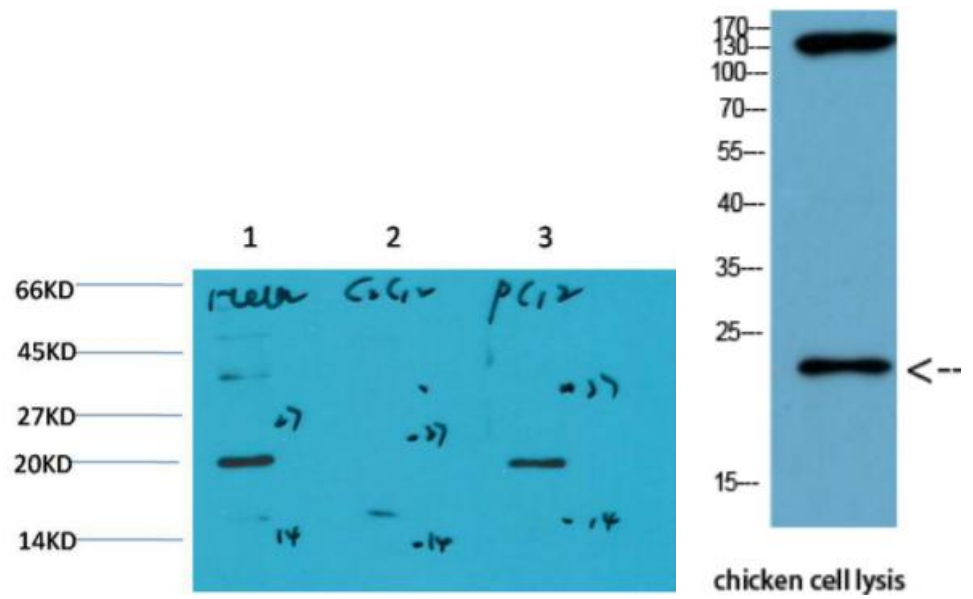


- ◆ Immunohistochemical analysis of paraffin-embedded Mouse Kidney Tissue using Bax Mouse mAb diluted at 1:200.



- ◆ Immunohistochemical analysis of paraffin-embedded Rat Testis Tissue using Bax Mouse mAb

diluted at 1:200.



- ♦ Western blot analysis of 1) HeLa Cell Lysate, 2) C2C12 Cell Lysate, 3) PC12 Cell Lysate using Bax Mouse mAb diluted at 1:1000. (left)
- ♦ Western Blot analysis of chicken cell lysis using Antibody diluted at 1:1000 (right)

### **PRODUCT USE LIMITATION**

These products are intended for research use only.