

GSK3 β (phospho Ser9) Polyclonal Antibody

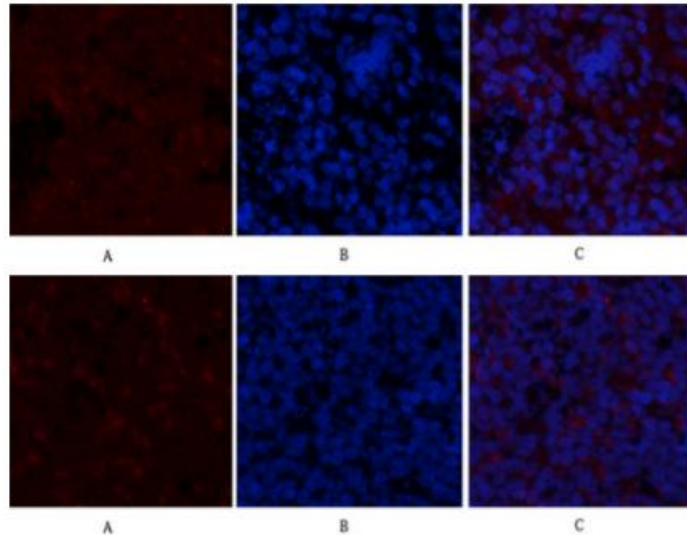
Cat# A20216PI– 20/50/100 ug

Storage at -20 °C

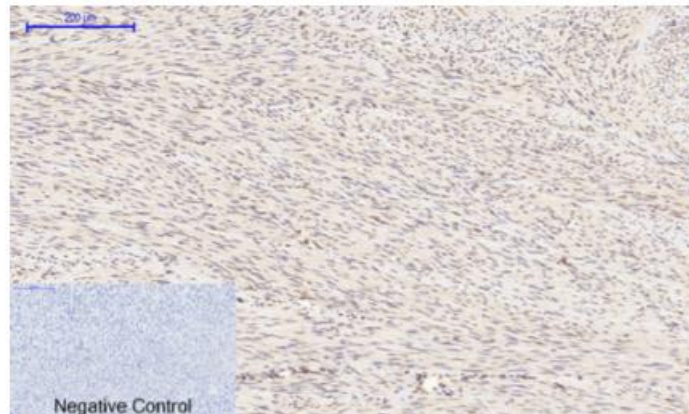
INFORMATION

Product Name	GSK3 β (phospho Ser9) Polyclonal Antibody
Cat. No.	A20216PI
Product type	Primary antibodies
Species reactivity	Human, Mouse, Rat
Clonality	polyclonal
Host	Rabbit
Size	20 ug/50 ug/100 ug
Uniprot	Human: P49841/Mouse: Q9WV60/Rat: P18266
Gene name	GSK3B
Protein name	Glycogen synthase kinase-3 beta
Immunogen	The antiserum was produced against synthesized peptide derived from human GSK3 beta around the phosphorylation site of Ser9. AA range:1-50
Specificity	Phospho-GSK3 β (S9) Polyclonal Antibody detects endogenous levels of GSK3 β protein only when phosphorylated at S9.
Concentration	1 mg/ml
Tested applications	WB, IHC-p, IF, IP, ELISA
Application	WB : 1:500-1:2000/IHC-p : 1:100-1:300/IF : 1:50-1:200/IP : 2-5 ug/mg lysate/ELISA : 1:5000. Not yet tested in other applications.
Conjugation	None
Purification	Affinity purified
Molecular Weight	48 kDa
Stock buffer	Liquid in PBS containing 50% glycerol, 0.5% BSA and 0.02% sodium azide
Storage instruction	Store at -20°C or -80°C for 1 year. Avoid repeated freeze/thaw cycles.
Alias	GSK3B; Glycogen synthase kinase-3 beta; GSK-3 beta; Serine/threonine-protein kinase GSK3B

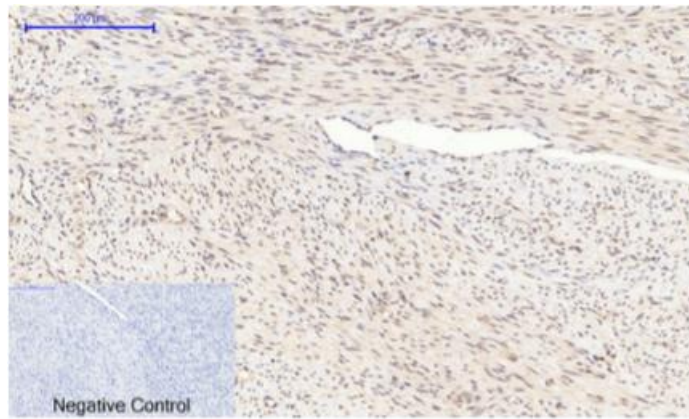
Image



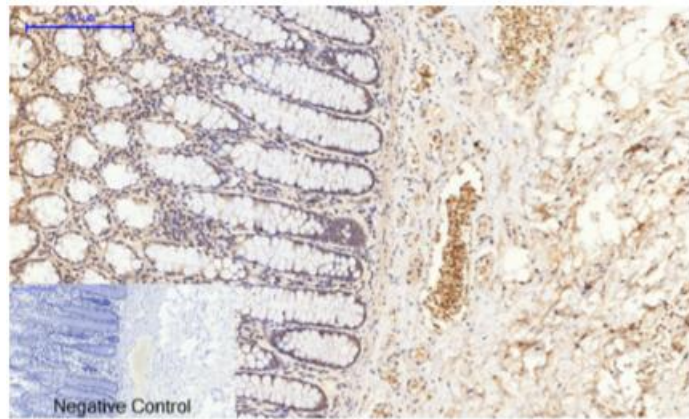
- ♦ Immunofluorescence analysis of rat-spleen tissue. 1,GSK3 β (phospho Ser9) Polyclonal Antibody(red) was diluted at 1:200(4°C,overnight). 2, Cy3 labled Secondary antibody was diluted at 1:300(room temperature, 50min).3, Picture B: DAPI(blue) 10min. Picture A:Target. Picture B: DAPI. Picture C: merge of A+B
- ♦ Immunofluorescence analysis of rat-spleen tissue. 1,GSK3 β (phospho Ser9) Polyclonal Antibody(red) was diluted at 1:200(4°C,overnight). 2, Cy3 labled Secondary antibody was diluted at 1:300(room temperature, 50min).3, Picture B: DAPI(blue) 10min. Picture A:Target. Picture B: DAPI. Picture C: merge of A+B



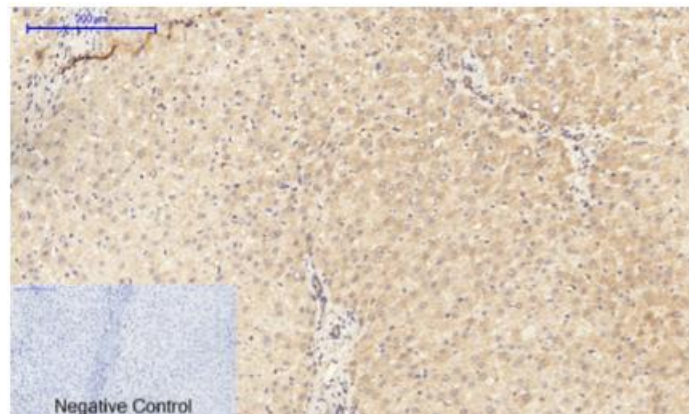
- ♦ Immunohistochemical analysis of paraffin-embedded Human-uterus tissue. 1,GSK3 β (phospho Ser9) Polyclonal Antibody was diluted at 1:200(4°C,overnight). 2, Sodium citrate pH 6.0 was used for antibody retrieval(>98°C,20min). 3,Secondary antibody was diluted at 1:200(room temperature, 30min). Negative control was used by secondary antibody only.



- ◆ Immunohistochemical analysis of paraffin-embedded Human-uterus-cancer tissue. 1,GSK3 β (phospho Ser9) Polyclonal Antibody was diluted at 1:200(4°C,overnight). 2, Sodium citrate pH 6.0 was used for antibody retrieval(>98°C,20min). 3,Secondary antibody was diluted at 1:200(room tempeRature, 30min). Negative control was used by secondary antibody only.

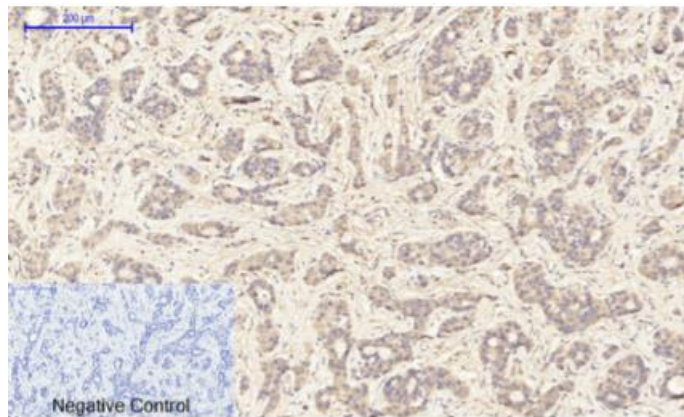


- ◆ Immunohistochemical analysis of paraffin-embedded Human-colon tissue. 1,GSK3 β (phospho Ser9) Polyclonal Antibody was diluted at 1:200(4°C,overnight). 2, Sodium citrate pH 6.0 was used for antibody retrieval(>98°C,20min). 3,Secondary antibody was diluted at 1:200(room tempeRature, 30min). Negative control was used by secondary antibody only.

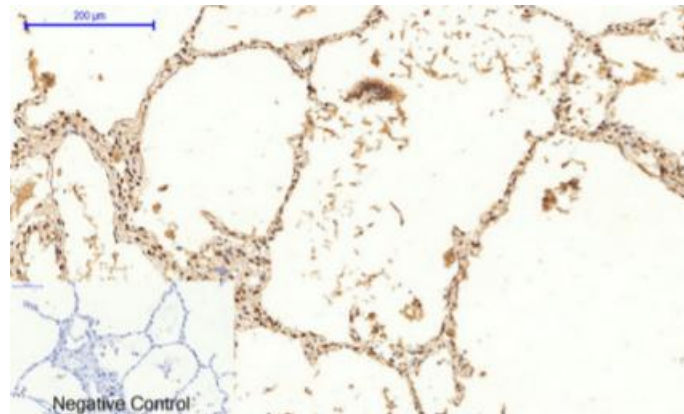


- ◆ Immunohistochemical analysis of paraffin-embedded Human-liver tissue. 1,GSK3 β (phospho Ser9) Polyclonal Antibody was diluted at 1:200(4°C,overnight). 2, Sodium citrate pH 6.0 was used for antibody retrieval(>98°C,20min). 3,Secondary antibody was diluted at 1:200(room

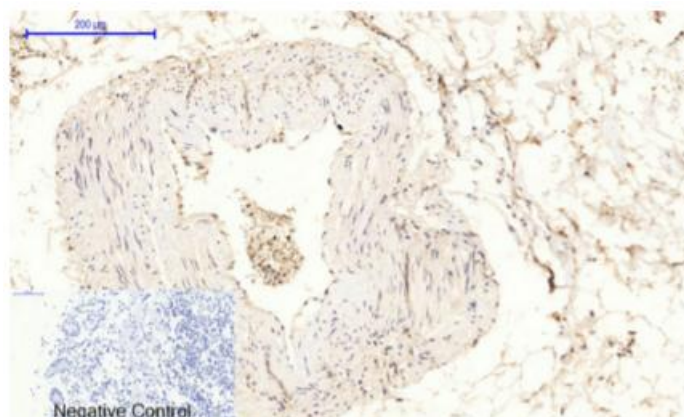
temperature, 30min). Negative control was used by secondary antibody only.



- ♦ Immunohistochemical analysis of paraffin-embedded Human-liver-cancer tissue. 1,GSK3β (phospho Ser9) Polyclonal Antibody was diluted at 1:200(4°C,overnight). 2, Sodium citrate pH 6.0 was used for antibody retrieval(>98°C,20min). 3,Secondary antibody was diluted at 1:200(room temperature, 30min). Negative control was used by secondary antibody only.

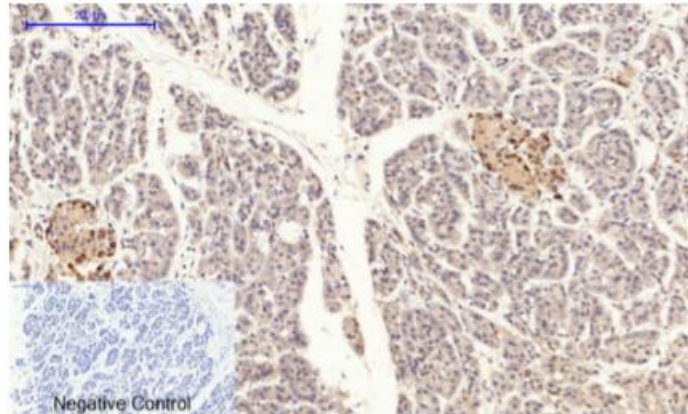


- ♦ Immunohistochemical analysis of paraffin-embedded Human-lung tissue. 1,GSK3β (phospho Ser9) Polyclonal Antibody was diluted at 1:200(4°C,overnight). 2, Sodium citrate pH 6.0 was used for antibody retrieval(>98°C,20min). 3,Secondary antibody was diluted at 1:200(room temperature, 30min). Negative control was used by secondary antibody only.

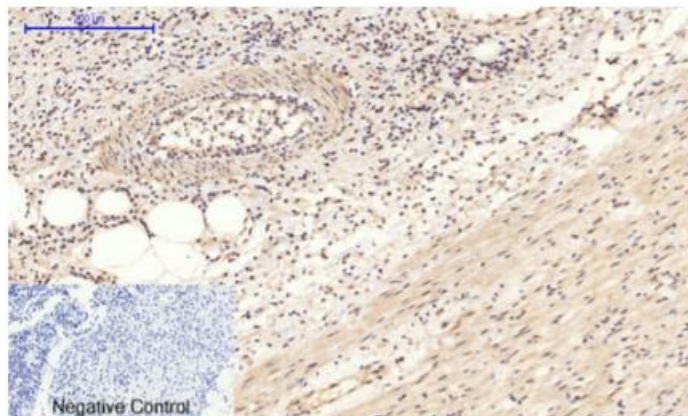


- ♦ Immunohistochemical analysis of paraffin-embedded Human-stomach tissue. 1,GSK3β (phospho Ser9) Polyclonal Antibody was diluted at 1:200(4°C,overnight). 2, Sodium citrate pH 6.0 was used

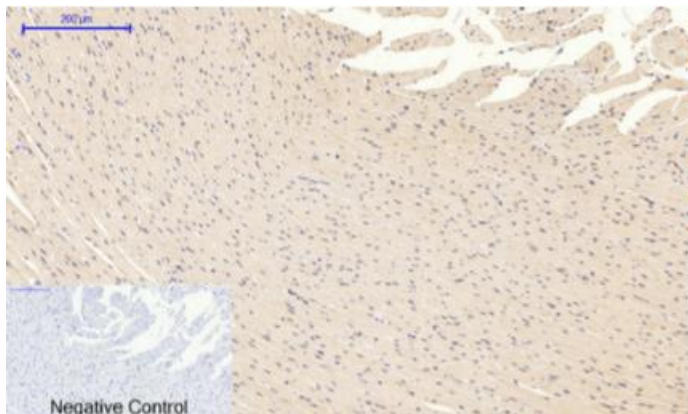
for antibody retrieval(>98°C,20min). 3,Secondary antibody was diluted at 1:200(room temperature, 30min). Negative control was used by secondary antibody only.



- ♦ Immunohistochemical analysis of paraffin-embedded Human-stomach-cancer tissue. 1,GSK3β (phospho Ser9) Polyclonal Antibody was diluted at 1:200(4°C,overnight). 2, Sodium citrate pH 6.0 was used for antibody retrieval(>98°C,20min). 3,Secondary antibody was diluted at 1:200(room temperature, 30min). Negative control was used by secondary antibody only.

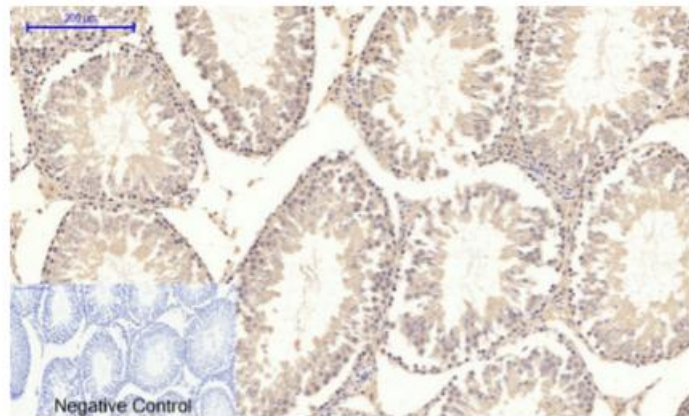


- ♦ Immunohistochemical analysis of paraffin-embedded Human-Appendix tissue. 1,GSK3β (phospho Ser9) Polyclonal Antibody was diluted at 1:200(4°C,overnight). 2, Sodium citrate pH 6.0 was used for antibody retrieval(>98°C,20min). 3,Secondary antibody was diluted at 1:200(room temperature, 30min). Negative control was used by secondary antibody only.

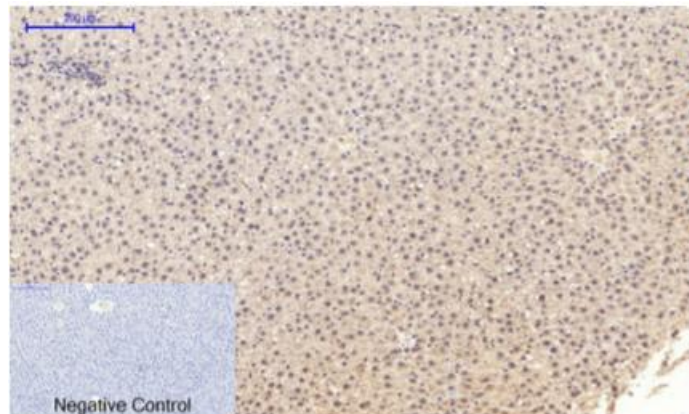


- ♦ Immunohistochemical analysis of paraffin-embedded Rat-heart tissue. 1,GSK3β (phospho Ser9)

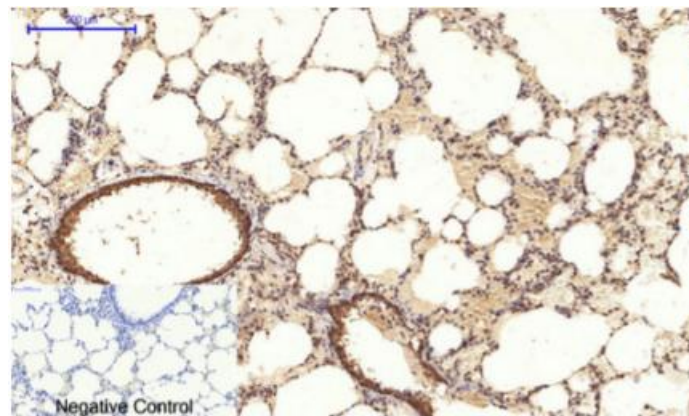
Polyclonal Antibody was diluted at 1:200(4°C,overnight). 2, Sodium citrate pH 6.0 was used for antibody retrieval(>98°C,20min). 3,Secondary antibody was diluted at 1:200(room temperature, 30min). Negative control was used by secondary antibody only.



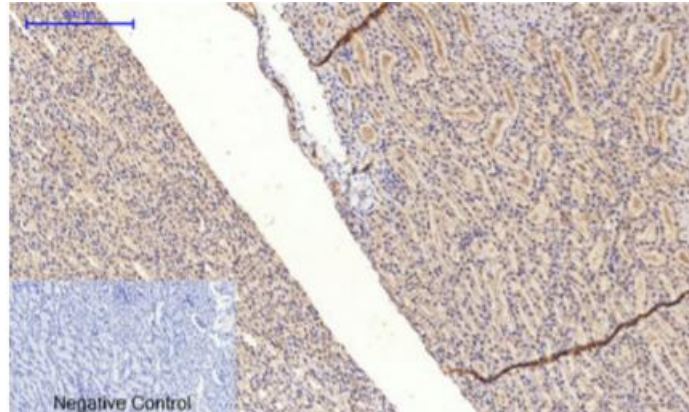
- ♦ Immunohistochemical analysis of paraffin-embedded Rat-testis tissue. 1,GSK3β (phospho Ser9) Polyclonal Antibody was diluted at 1:200(4°C,overnight). 2, Sodium citrate pH 6.0 was used for antibody retrieval(>98°C,20min). 3,Secondary antibody was diluted at 1:200(room temperature, 30min). Negative control was used by secondary antibody only.



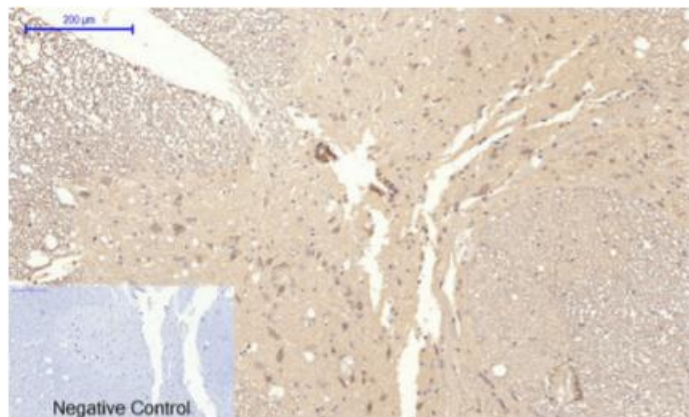
- ♦ Immunohistochemical analysis of paraffin-embedded Rat-liver tissue. 1,GSK3β (phospho Ser9) Polyclonal Antibody was diluted at 1:200(4°C,overnight). 2, Sodium citrate pH 6.0 was used for antibody retrieval(>98°C,20min). 3,Secondary antibody was diluted at 1:200(room temperature, 30min). Negative control was used by secondary antibody only.



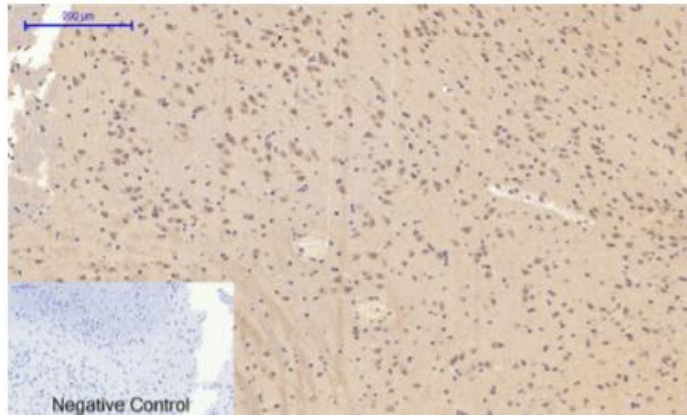
- ♦ Immunohistochemical analysis of paraffin-embedded Rat-lung tissue. 1,GSK3 β (phospho Ser9) Polyclonal Antibody was diluted at 1:200(4°C,overnight). 2, Sodium citrate pH 6.0 was used for antibody retrieval(>98°C,20min). 3,Secondary antibody was diluted at 1:200(room temperature, 30min). Negative control was used by secondary antibody only.



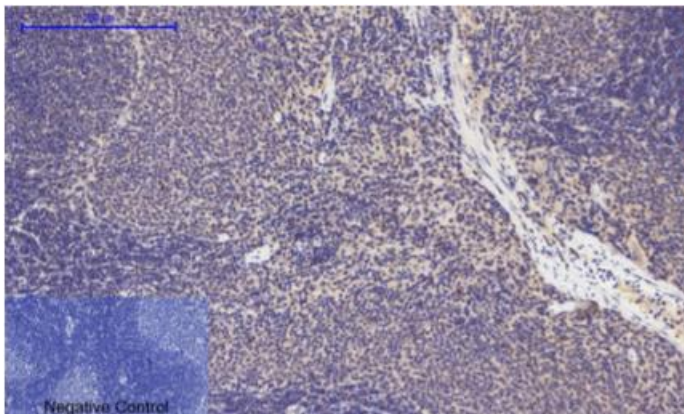
- ♦ Immunohistochemical analysis of paraffin-embedded Rat-kidney tissue. 1,GSK3 β (phospho Ser9) Polyclonal Antibody was diluted at 1:200(4°C,overnight). 2, Sodium citrate pH 6.0 was used for antibody retrieval(>98°C,20min). 3,Secondary antibody was diluted at 1:200(room temperature, 30min). Negative control was used by secondary antibody only.



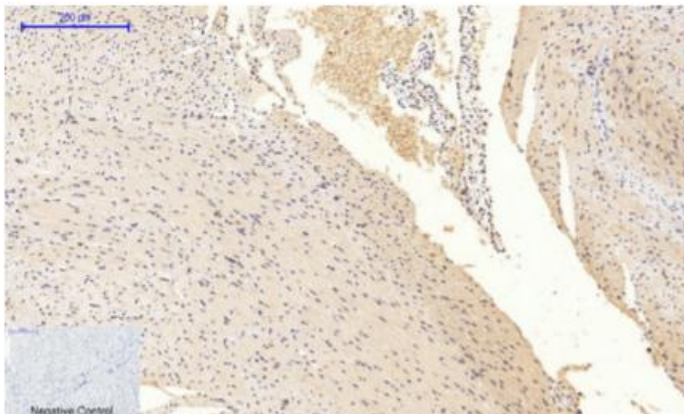
- ♦ Immunohistochemical analysis of paraffin-embedded Rat-spinal-cord tissue. 1,GSK3 β (phospho Ser9) Polyclonal Antibody was diluted at 1:200(4°C,overnight). 2, Sodium citrate pH 6.0 was used for antibody retrieval(>98°C,20min). 3,Secondary antibody was diluted at 1:200(room temperature, 30min). Negative control was used by secondary antibody only.



- ♦ Immunohistochemical analysis of paraffin-embedded Rat-brain tissue. 1,GSK3β (phospho Ser9) Polyclonal Antibody was diluted at 1:200(4°C,overnight). 2, Sodium citrate pH 6.0 was used for antibody retrieval(>98°C,20min). 3,Secondary antibody was diluted at 1:200(room temperature, 30min). Negative control was used by secondary antibody only.

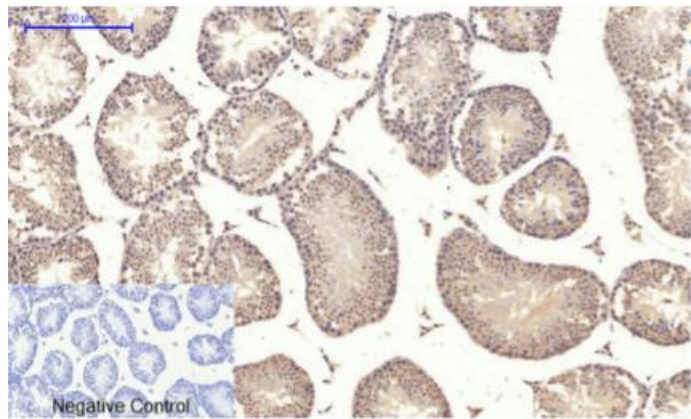


- ♦ Immunohistochemical analysis of paraffin-embedded Rat-spleen tissue. 1,GSK3β (phospho Ser9) Polyclonal Antibody was diluted at 1:200(4°C,overnight). 2, Sodium citrate pH 6.0 was used for antibody retrieval(>98°C,20min). 3,Secondary antibody was diluted at 1:200(room temperature, 30min). Negative control was used by secondary antibody only.

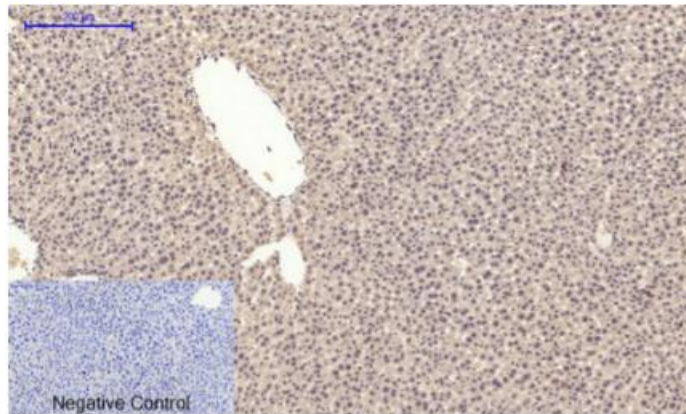


- ♦ Immunohistochemical analysis of paraffin-embedded Mouse-heart tissue. 1,GSK3β (phospho Ser9) Polyclonal Antibody was diluted at 1:200(4°C,overnight). 2, Sodium citrate pH 6.0 was used for antibody retrieval(>98°C,20min). 3,Secondary antibody was diluted at 1:200(room

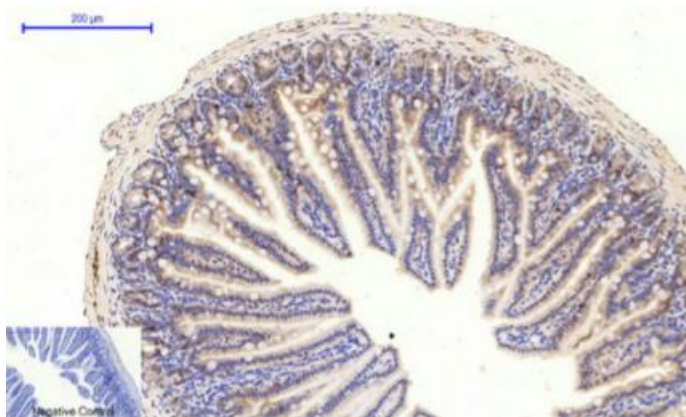
temperature, 30min). Negative control was used by secondary antibody only.



- ◆ Immunohistochemical analysis of paraffin-embedded Mouse-testis tissue. 1,GSK3 β (phospho Ser9) Polyclonal Antibody was diluted at 1:200(4°C,overnight). 2, Sodium citrate pH 6.0 was used for antibody retrieval(>98°C,20min). 3,Secondary antibody was diluted at 1:200(room temperature, 30min). Negative control was used by secondary antibody only.

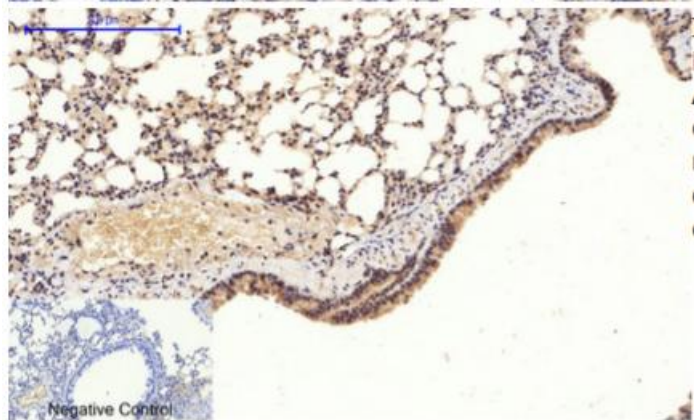


- ◆ Immunohistochemical analysis of paraffin-embedded Mouse-liver tissue. 1,GSK3 β (phospho Ser9) Polyclonal Antibody was diluted at 1:200(4°C,overnight). 2, Sodium citrate pH 6.0 was used for antibody retrieval(>98°C,20min). 3,Secondary antibody was diluted at 1:200(room temperature, 30min). Negative control was used by secondary antibody only.

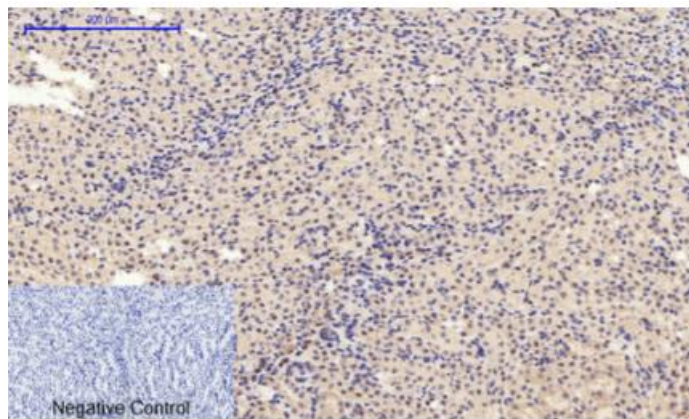


- ◆ Immunohistochemical analysis of paraffin-embedded Mouse-colon tissue. 1,GSK3 β (phospho Ser9) Polyclonal Antibody was diluted at 1:200(4°C,overnight). 2, Sodium citrate pH 6.0 was used

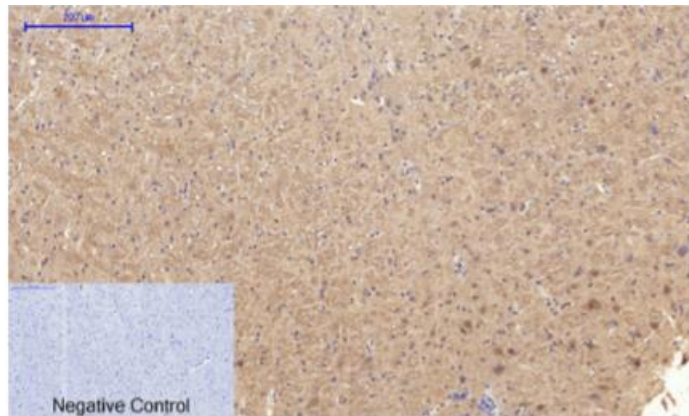
for antibody retrieval(>98°C,20min). 3,Secondary antibody was diluted at 1:200(room temperature, 30min). Negative control was used by secondary antibody only.



- ♦ Immunohistochemical analysis of paraffin-embedded Mouse-lung tissue. 1,GSK3β (phospho Ser9) Polyclonal Antibody was diluted at 1:200(4°C,overnight). 2, Sodium citrate pH 6.0 was used for antibody retrieval(>98°C,20min). 3,Secondary antibody was diluted at 1:200(room temperature, 30min). Negative control was used by secondary antibody only.

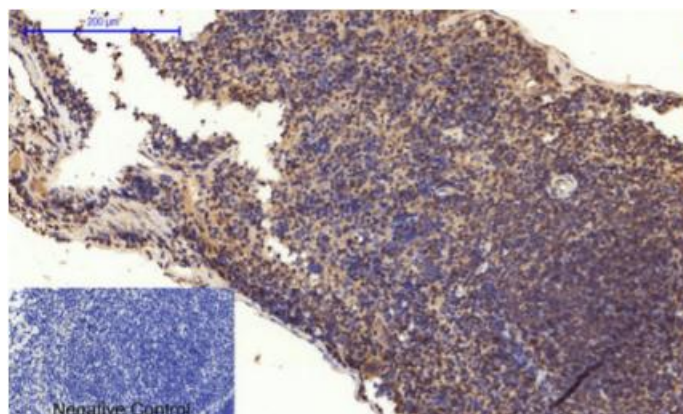


- ♦ Immunohistochemical analysis of paraffin-embedded Mouse-kidney tissue. 1,GSK3β (phospho Ser9) Polyclonal Antibody was diluted at 1:200(4°C,overnight). 2, Sodium citrate pH 6.0 was used for antibody retrieval(>98°C,20min). 3,Secondary antibody was diluted at 1:200(room temperature, 30min). Negative control was used by secondary antibody only.

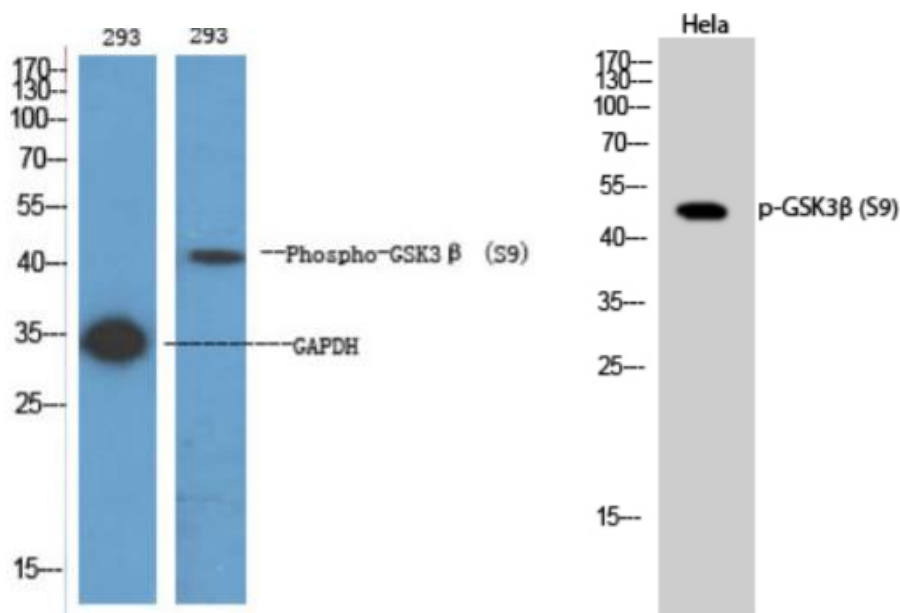


- ♦ Immunohistochemical analysis of paraffin-embedded Mouse-brain tissue. 1,GSK3β (phospho

Ser9) Polyclonal Antibody was diluted at 1:200(4°C,overnight). 2, Sodium citrate pH 6.0 was used for antibody retrieval(>98°C,20min). 3,Secondary antibody was diluted at 1:200(room temperature, 30min). Negative control was used by secondary antibody only.



- ◆ Immunohistochemical analysis of paraffin-embedded Mouse-spleen tissue. 1,GSK3β (phospho Ser9) Polyclonal Antibody was diluted at 1:200(4°C,overnight). 2, Sodium citrate pH 6.0 was used for antibody retrieval(>98°C,20min). 3,Secondary antibody was diluted at 1:200(room temperature, 30min). Negative control was used by secondary antibody only.



- ◆ Western Blot analysis of various cells using PhosphoGSK3β (S9) Polyclonal Antibody diluted at 1 : 1000 (left)
- ◆ Western Blot analysis of Hela cells using Phospho-GSK3β (S9) Polyclonal Antibody diluted at 1 : 1000 (right)

PRODUCT USE LIMITATION

These products are intended for research use only.