

# AceColor Prestained Protein Marker (8.5-180 kDa)

Cat# A1053 – 2 x250 µl

Storage at -20°C

## INFORMATION

ACE Biolabs AceColor Prestained Protein Ladder is a mixture of 10 blue-, a orange-, and a green-stained proteins (8.5 to 180 kDa) for use as size standards in protein electrophoresis (SDS-PAGE) and Western blotting. Molecular Weight: 180, 130, 95, 72(orange), 55, 43, 34, 25, 17, 8.5(green) kDa

The protein ladder is supplied in a ready-to-use format for direct loading onto gels; no need to heat, reduce, or add sample buffer prior to use.

## Applications

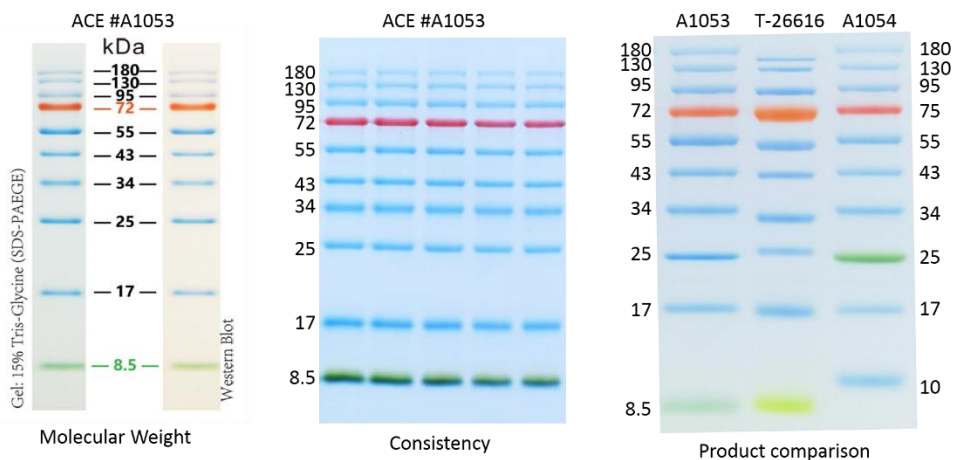
- Monitoring protein migration during SDS-PAGE.
- Monitoring protein transfer efficiency on membranes after Western blot transferring.
- Sizing estimation of proteins on SDS-PAGE and Western blots.

## PROTOCOL

- For SDS-PAGE: Loading 3 µl or 5 µl per well for clear monitoring electrophoresis on a 15-well or 10-well mini-gel. Apply more for a thicker (> 1.5 mm) or larger gel
- For Western blotting: Loading 1.5~2.5 µl per well for monitoring electrophoresis and general Western blot transferring efficiency. Apply more for a thicker (> 1.5 mm) or larger gel

**Note: Do NOT heat, dilute, or add reducing agents before loading.**

## IMAGE



## PRODUCT USE LIMITATION

These products are intended for research use only.