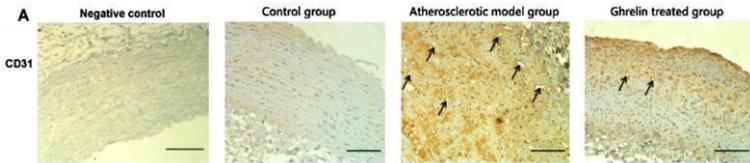


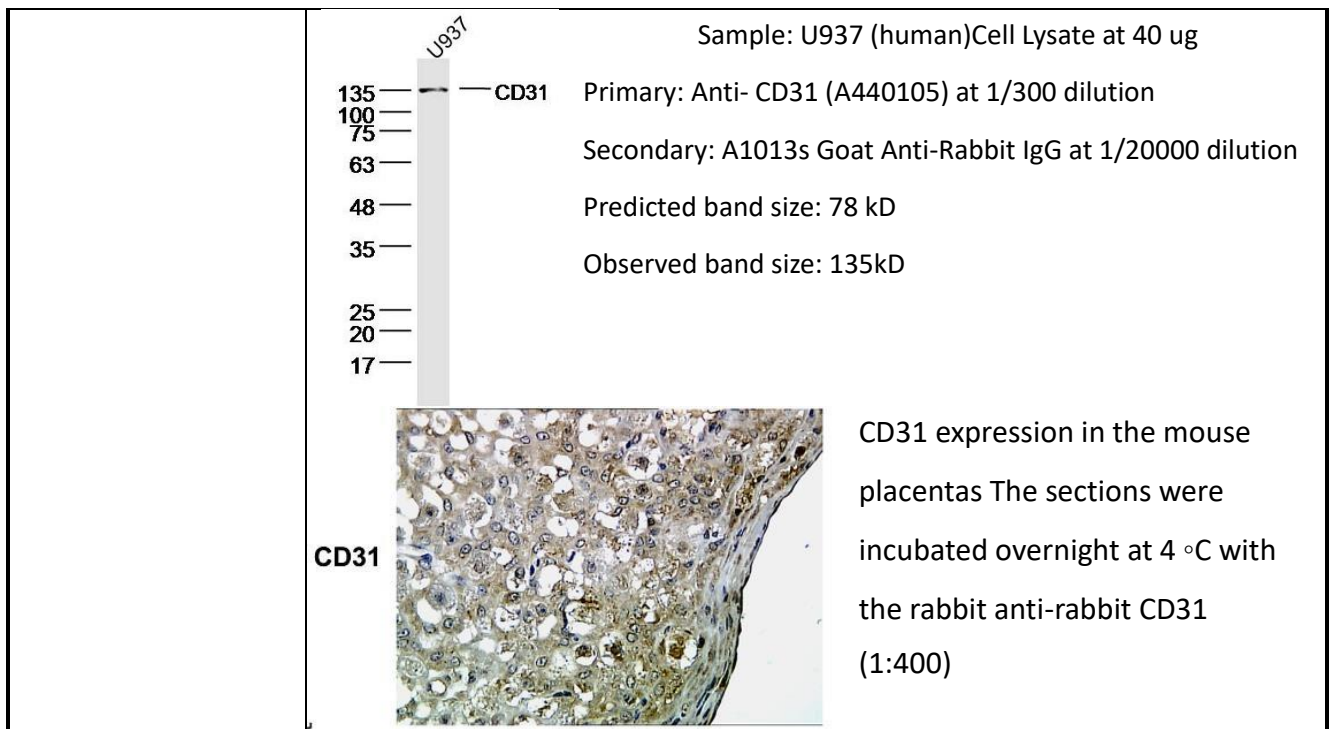
Anti -CD31 Antibody (Rabbit Polyclonal)

Cat# A440105

Upon receipt, store at -20°C. Avoid repeated freeze.

INFORMATION

Product Name	Anti -CD31 Antibody (Rabbit Polyclonal)
Cat. No.	A440105
Size	50ul ; 100 ul
Product type	Primary antibody
Species Reactivity	Human, Mouse, Rat, Dog, Pig, Cow, Rabbit, Sheep
Immunogen	KLH conjugated synthetic peptide derived from human CD31:681-738/738
Host	Rabbit
Concentration	1 mg/mL
Clonality	Polyclonal
Tested applications	WB, ELISA, IHC-P
Application	WB:1:500-1:2000, ELISA: 1:500-1:1000, IHC-P:1:50-1:200
Conjugation	Non-conjugated
Purification Method	Affinity purification by protein A
Storage buffer	0.01M TBS(pH7.4) with 1% BSA, 0.03% Proclin300 and 50% Glycerol
Image	 <p>CD31 expression level in rabbits of control, atherosclerotic model, and ghrelin treated groups. Arrow heads show the neovascularization in the abdominal aortas plaques. The sections were incubated overnight at 4 °C with the rabbit anti-rabbit CD31 (1:500),</p>



PRODUCT USE LIMITATION

These products are intended for research use only.