

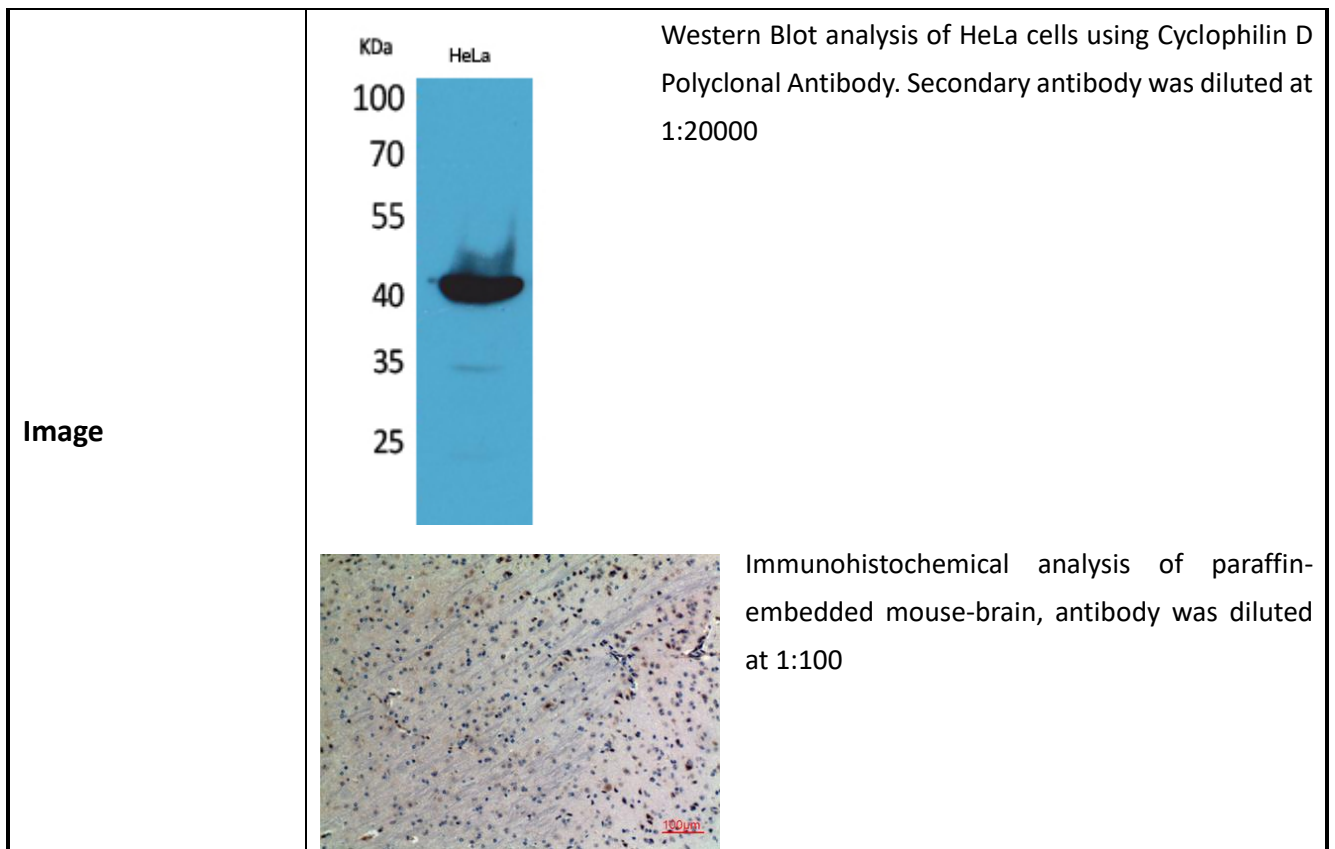
# Cyclophilin D Polyclonal Antibody

Cat# A22619PI

Upon receipt, store at -20°C for 1 year

## INFORMATION

<b>Product Name</b>	Cyclophilin D Polyclonal Antibody
<b>Cat. No.</b>	A22619PI
<b>Size</b>	100µg/50µg/20µg
<b>Uniprot</b>	Q08752
<b>Product type</b>	Primary antibody
<b>Species Reactivity</b>	Human,Mouse,Rat
<b>Immunogen</b>	The antiserum was produced against synthesized peptide derived from the C-terminal region of human PPID. AA range:321-370
<b>Host</b>	Rabbit
<b>Concentration</b>	1 mg/ml
<b>Clonality</b>	Polyclonal
<b>Tested applications</b>	WB,IHC-p,ELISA
<b>Application</b>	Western Blot: 1/500 - 1/2000. IHC-p: 1:100-300 ELISA: 1/20000. Not yet tested in other applications.
<b>Purification Method</b>	The antibody was affinity-purified from rabbit antiserum by affinity-chromatography using epitope-specific immunogen.
<b>Storage instruction</b>	-20°C/1 year
<b>Alias</b>	PPID; CYP40; CYPD; Peptidyl-prolyl cis-trans isomerase D; PPIase D; 40 kDa peptidyl-prolyl cis-trans isomerase; Cyclophilin-40; CYP-40; Cyclophilin-related protein; Rotamase D



### **PRODUCT USE LIMITATION**

These products are intended for research use only.