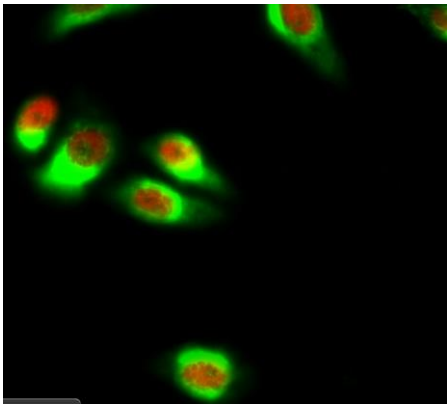


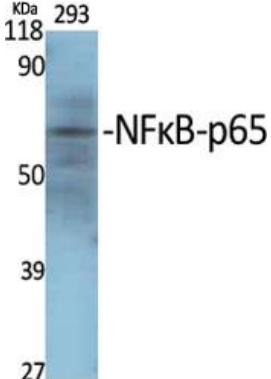
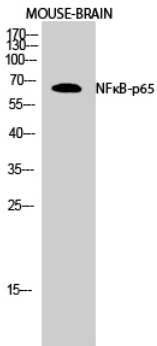
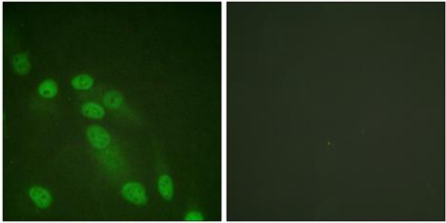
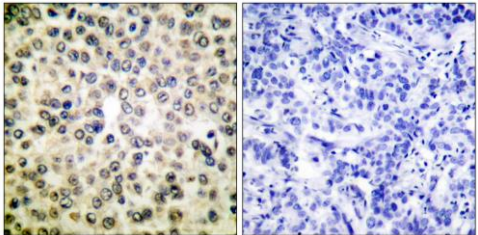
# NFκB p65 Polyclonal Antibody

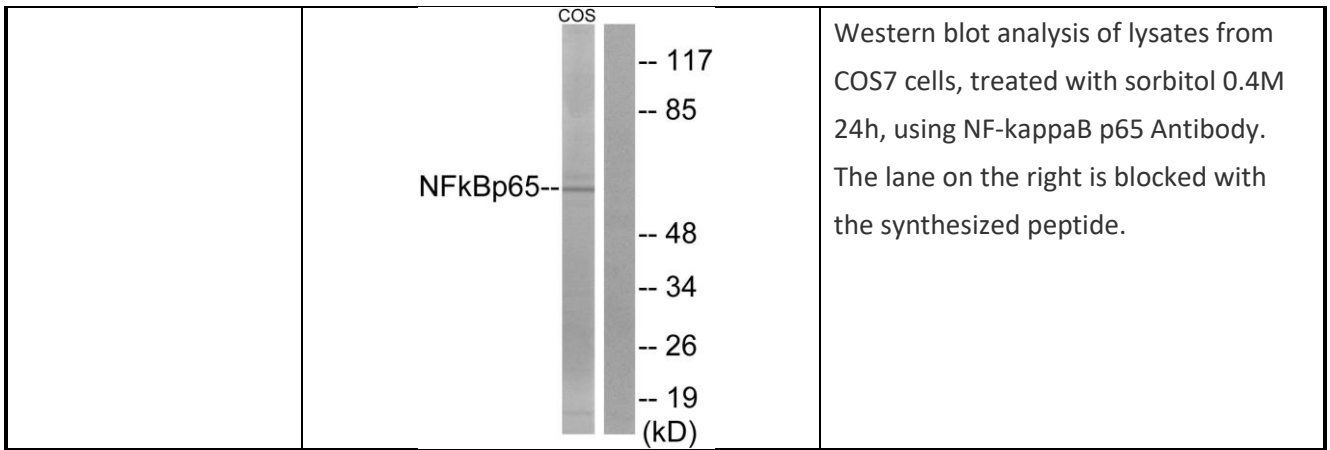
Cat# A140114

Upon receipt, store at -20°C. Avoid repeated freeze.

## INFORMATION

<b>Product Name</b>	NFκB p65 Polyclonal Antibody	
<b>Cat. No.</b>	A140114	
<b>Size</b>	50ug/100ug	
<b>Uniprot</b>	Human Q04206 ; Mouse Q04207	
<b>Product type</b>	Primary antibody	
<b>Species Reactivity</b>	Human,Mouse,Monkey	
<b>Immunogen</b>	The antiserum was produced against synthesized peptide derived from human NF-kappaB p65. AA range:275-324	
<b>Host</b>	Rabbit	
<b>Concentration</b>	1 mg/ml	
<b>Clonality</b>	Polyclonal	
<b>Tested applications</b>	WB,IHC-p,IF/ICC,ELISA	
<b>Application</b>	Western Blot: 1/500 - 1/2000. Immunohistochemistry: 1/100 - 1/300.Immunofluorescence: 1/200 - 1/1000. ELISA: 1/10000.	
<b>Molecular weight</b>	60 KD	
<b>Purification Method</b>	The antibody was affinity-purified from rabbit antiserum by affinitychromatography using epitope-specific immunogen.	
<b>Storage instruction</b>	-20°C/1 year	
<b>Alias</b>	RELA; NFKB3; Transcription factor p65; Nuclear factor NF-kappa-B p65 subunit; Nuclear factor of kappa light polypeptide gene enhancer in B-cells 3	
<b>Image</b>		<p>Immunofluorescence analysis of HeLa cell.</p> <p>1,NFκB-p65 Polyclonal Antibody(red) was diluted at 1:200(4° overnight). Bcl-2 Monoclonal Antibody(6B5)(green) was diluted at 1:200(4° overnight).</p> <p>2, Goat Anti Rabbit Alexa Fluor 594 was diluted at 1:1000(room temperature, 50min). Goat Anti Mouse Alexa Fluor 488 was diluted at 1:1000(room</p>

		temperature, 50min).
		Western Blot analysis of various cells using NFκB-p65 Polyclonal Antibody diluted at 1:2000
		Western Blot analysis of MOUSE-BRAIN cells using NFκB-p65 Polyclonal Antibody diluted at 1:2000
		Immunofluorescence analysis of HeLa cells, using NF-kappaB p65 Antibody. The picture on the right is blocked with the synthesized peptide.
		Immunohistochemistry analysis of paraffin-embedded human breast carcinoma tissue, using NF-kappaB p65 Antibody. The picture on the right is blocked with the synthesized peptide.



### **PRODUCT USE LIMITATION**

These products are intended for research use only.