

# QuickBlue Protein Gel Staining

Cat# C6003 – 500 ml

Storage at room temperature and protect from light

## INTRODUCTION

**QuickBlue Protein Gel Staining** is a protein gel dye without the need to gel fixation and de-staining. Also, the indigents don't contain methanol or acetic acid which are harmful and repulsive. It's a simple, time-saving and safe new-generation staining method for replacing the traditional Coomassive blue staining.

## CONTENTS

No	Component	C6003
AA	Quickblue Protein Gel Staining	500 ml

## PROTOCOL

1. Remove the gel from the electrophoresis tank and put it in the staining tank.
2. Soak gel in adequate QuickBlue Protein Gel Staining with gentle shaking for 10-20 minutes.

Note :

- a. For extremely high sensitivity experiment, it is generally possible to dye for 1-2 hours (10 ng protein can be detected)
- b. If the gel background is high, soaking the gel in water and replace water 4 times within 2hrs.

3. Store the staining gel in water.

## RESULTS

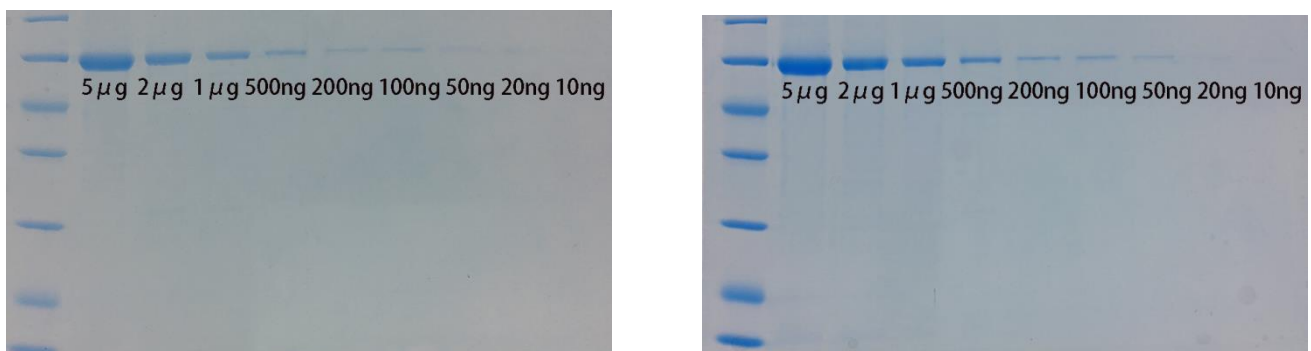


Figure1. : the result of SDS-PAGE with staining for 20 mins (left) and 60 mins (right).

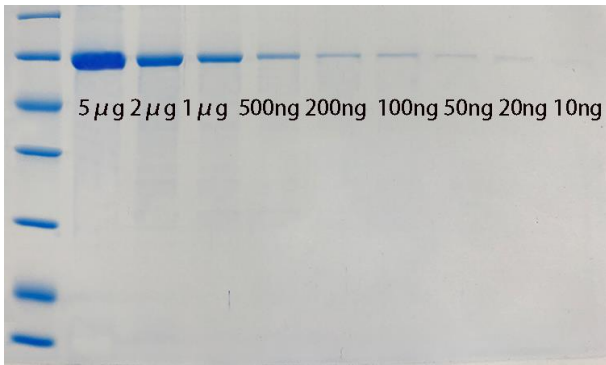


Figure2. : the gel background can be completely clear after shaking in water for 2hrs.

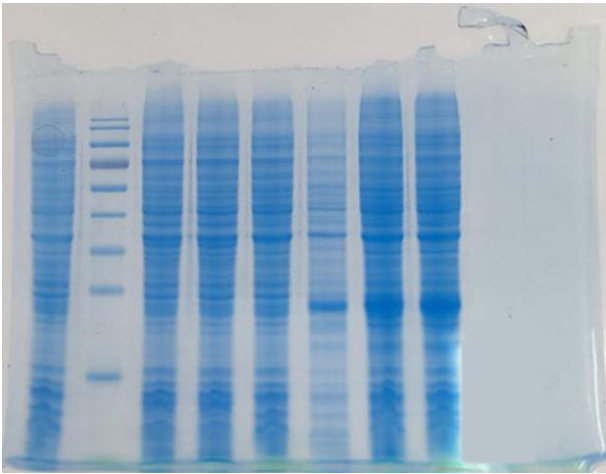


Figure3. : Customer review.

### **PRODUCT USE LIMITATION**

These products are intended for research use only.