

Sesamol

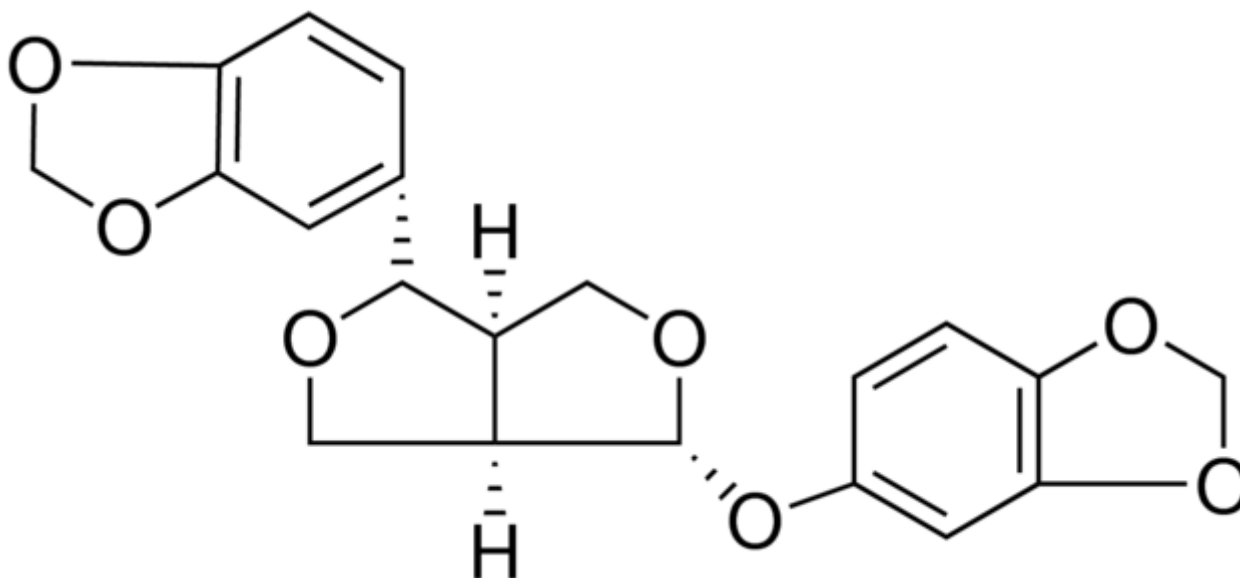
Cat# C4108

Store at 2-8°C

INTRODUCTION

CAS: 526-07-8**M.W:** 370.35**Formula:** C₂₀H₁₈O₇**Purity:** HPLC ≥ 98%**Solubility :** DMSO: 10 mg/mL

CHEMICAL STRUCTURE



PRODUCT USE LIMITATION

These products are intended for research use only.