

Enzalutamide (MDV3100)

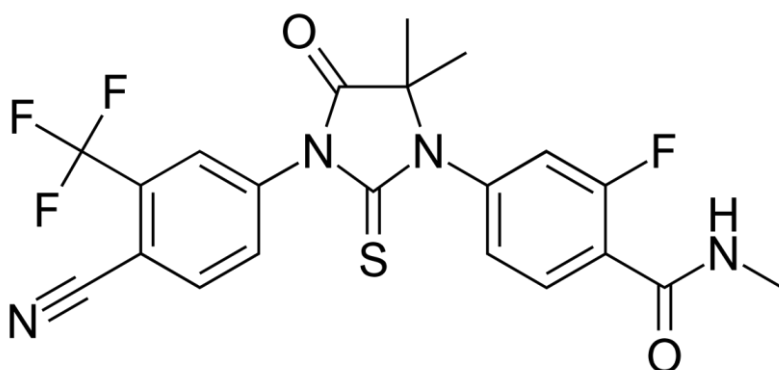
Cat# C4021

Store at -20°C for 3 years

INTRODUCTION

CAS: 915087-33-1**M.W:** 489.99**Formula:** C₂₁H₁₆F₄N₄O₂S**Purity:** ≥ 99%**Appearance:** Powder**Solubility:** DMSO: 10 mM**In vivo:** Enzalutamide induces great tumor regression in castrate male mice bearing LNCaP/AR xenografts at a dose of 10 mg/kg.

CHEMICAL STRUCTURE



PRODUCT USE LIMITATION

These products are intended for research use only.