

# Epicatechin

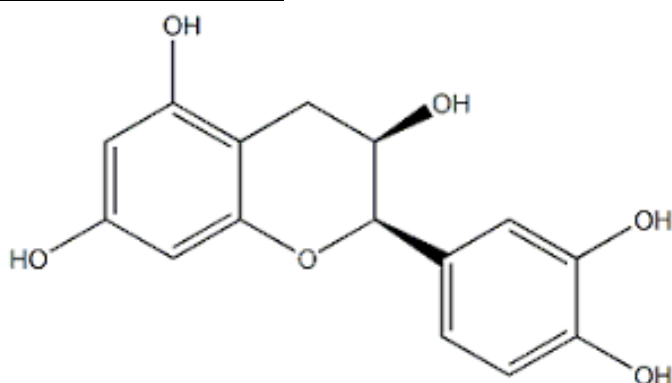
Cat# C3335

Store at 2 to 8°C

## INTRODUCTION

**CAS:** 490-46-0**M.W:** 290.27**Formula:** C<sub>15</sub>H<sub>14</sub>O<sub>6</sub>**Purity:** 98%**Appearance:** White or off-white to yellow powder**Solubility:** Soluble in acetone : water (1:1, 10 mg/ml), DMSO (100 mM), methanol, DMF (~12.5 mg/ml), and water (partly).**Synonym :** (-)-Epicatechin ; (-)-cis-3,3',4',5,7-Pentahydroxyflavane ; (2R,3R)-2-(3,4-Dihydroxyphenyl)-3,4-dihydro-1(2H)-benzopyran-3,5,7-triol

## CHEMICAL STRUCTURE



## PRODUCT USE LIMITATION

These products are intended for research use only.