

Pinusolidic acid

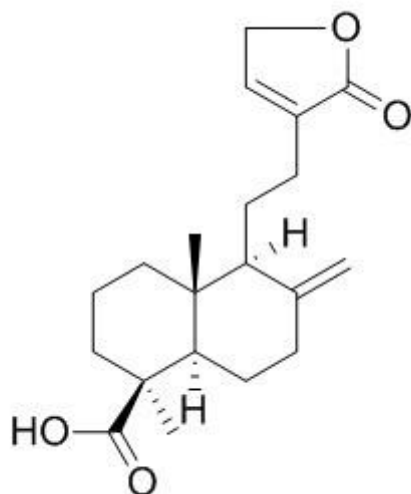
Cat# C3331

Store at 2 - 8 °C

INTRODUCTION

CAS: 40433-82-7**M.W:** 332.4**Formula:** C₂₀H₂₈O₄**Purity:** ≥ 98%**Solubility:** soluble in Chloroform, Dichloromethane, Ethyl Acetate, DMSO, Acetone

CHEMICAL STRUCTURE



PRODUCT USE LIMITATION

These products are intended for research use only.