

Kinsenoside

Cat# C3330

Store at -20°C

INTRODUCTION

CAS: 151870-74-5

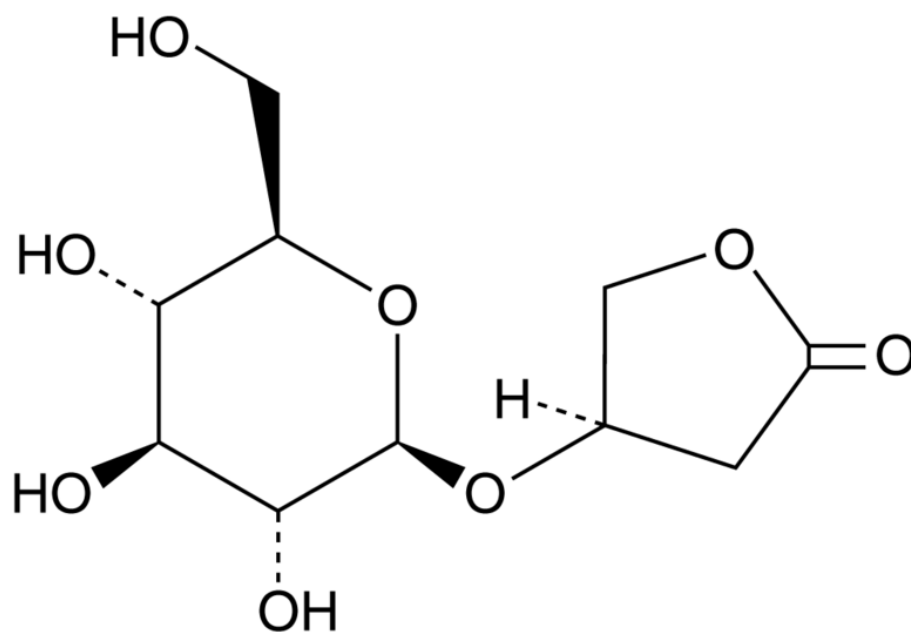
M.W: 264.23

Formula: C₁₀H₁₆O₈

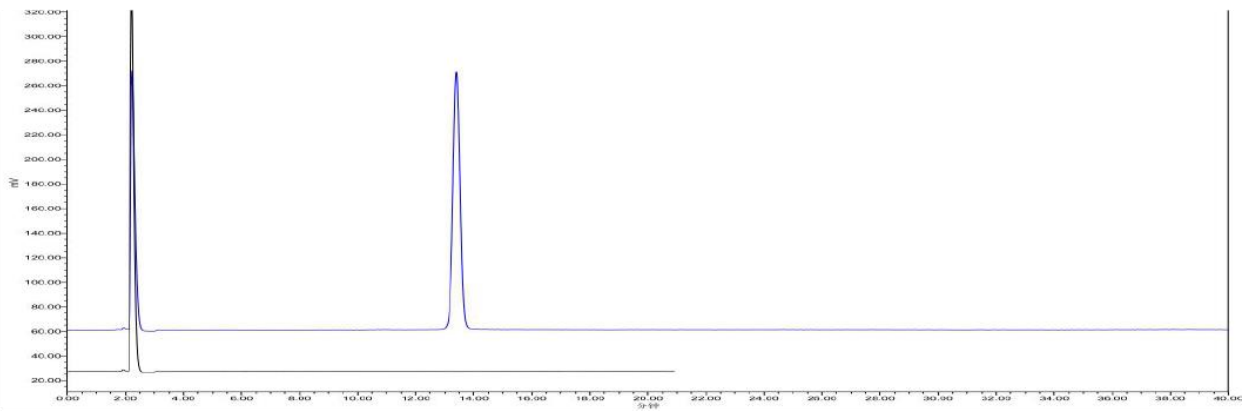
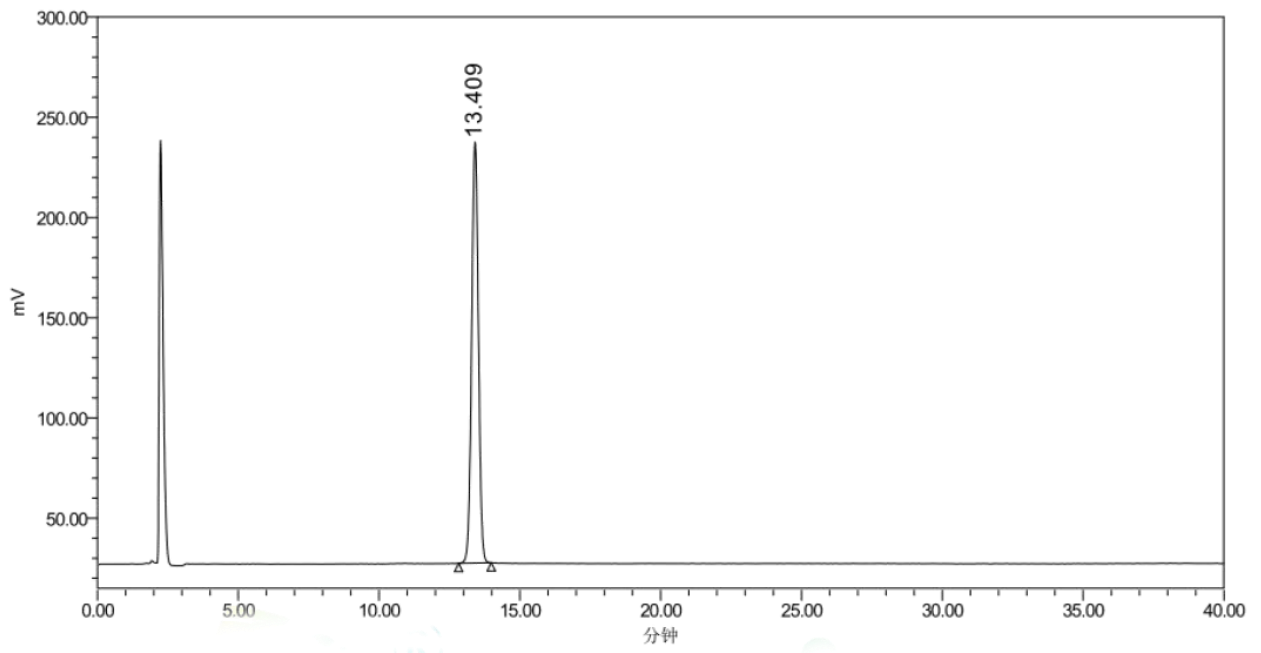
Purity: ≥98.0%

Solubility: DMSO: 16 mg/ml ; PBS (pH 7.2): 10 mg/ml

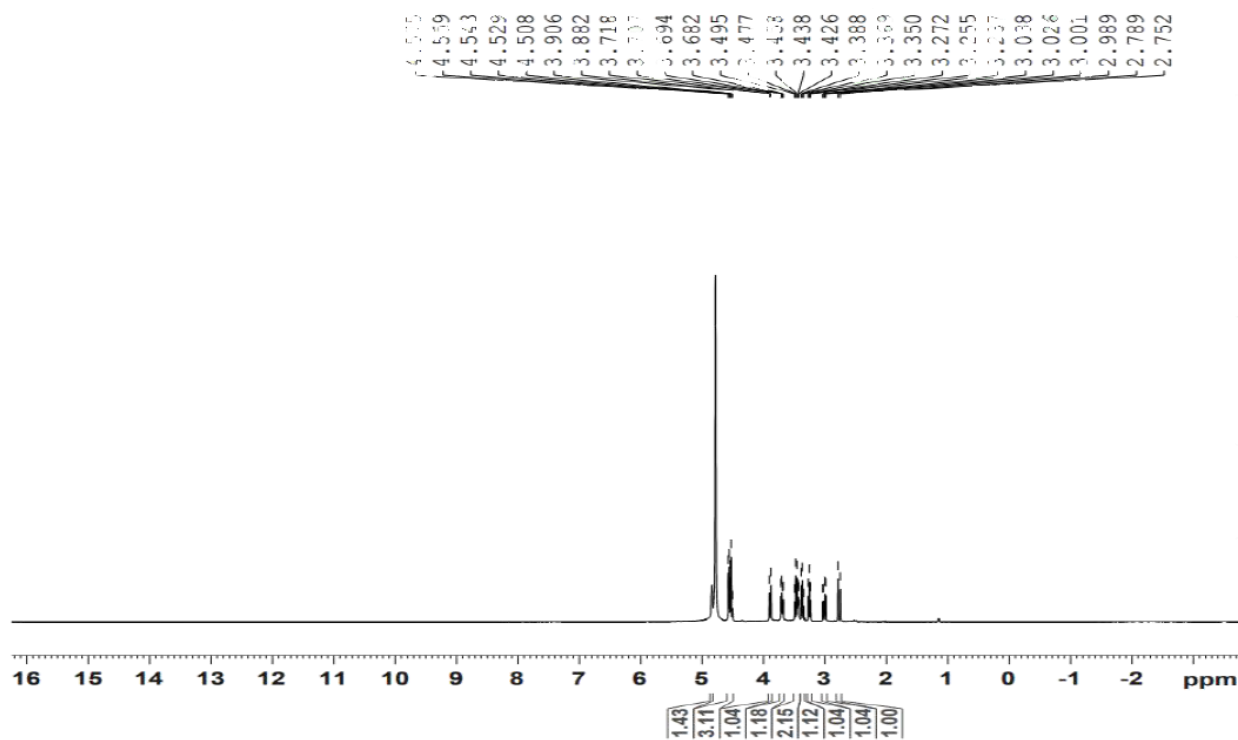
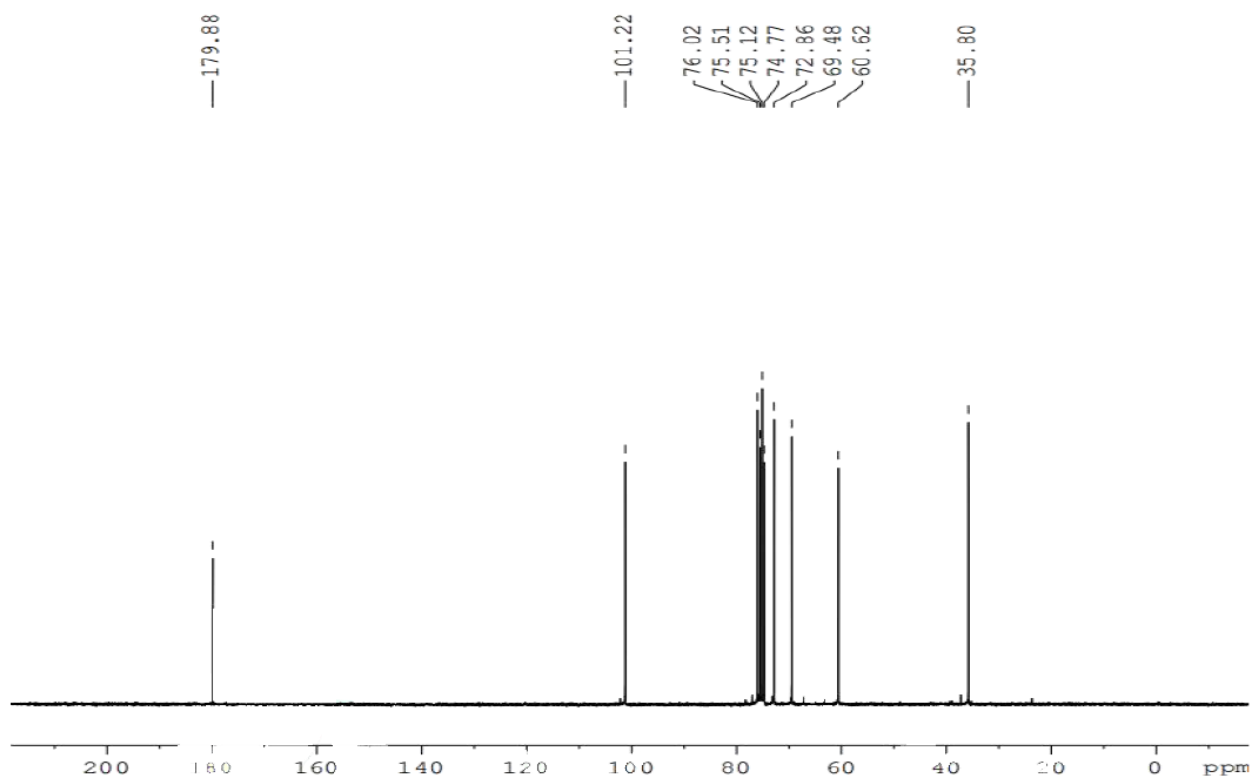
CHEMICAL STRUCTURE



HPLC



NMR



PRODUCT USE LIMITATION

These products are intended for research use only.