

Propidium iodide (PI)

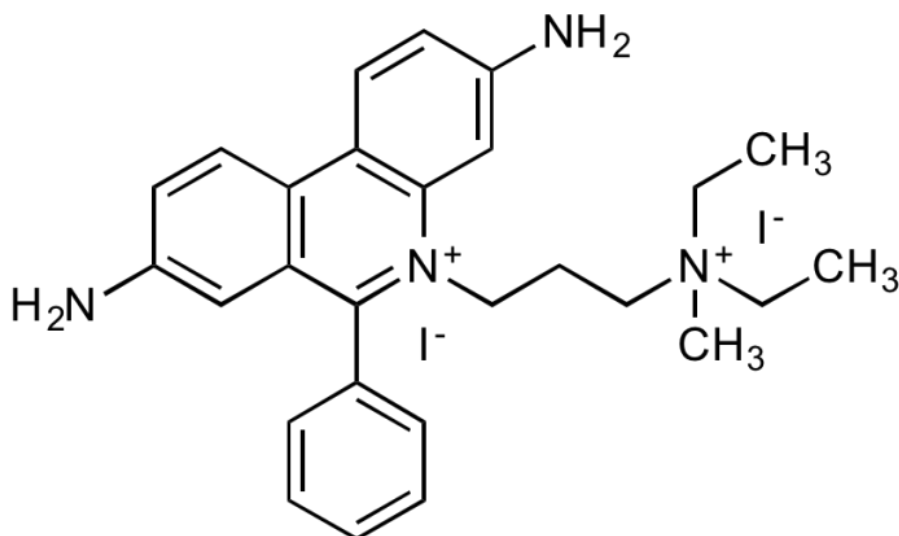
Cat# C3316

Store at 2-8°C and protect from light

INTRODUCTION

CAS: 25535-16-4**M.W:** 668.39**Formula:** C₂₇H₃₄I₂N₄**Purity:** ≥94%(HPLC)**Appearance:** Red crystalline powder**Melting Point :** 220~225°C**Solubility:** Soluble in water (1mg/ml), DMSO and methanol (3mg/ml)

CHEMICAL STRUCTURE



PRODUCT USE LIMITATION

These products are intended for research use only.