

Sucrose, $\geq 99.5\%$ (GC)

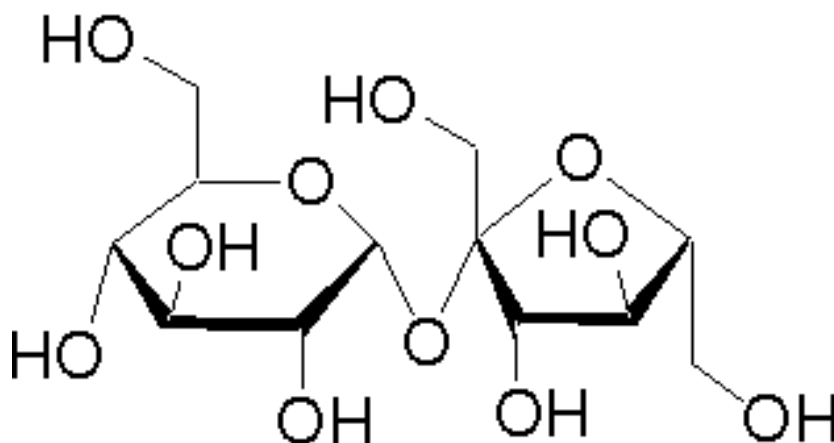
Cat# C3304

Store at Room temperature

INTRODUCTION

CAS: 57-50-1**M.W:** 342.3**Formula:** $C_{12}H_{22}O_{11}$ **Purity:** $\geq 99.5\%$ (GC)**Density :** 1.5805**Solubility :** 1g is soluble in 0.5ml water, 170ml ethanol, 100ml methanol, slightly soluble in glycerol and pyridine.**Synonym :** Cane sugar;beet sugar; α -D-Glc-(1 \rightarrow 2)- β -D-Fru; α -D-Glucopyranosyl β -D-fructofuranoside; β -D-Fructofuranosyl- α -D-glucopyranoside;D(+)-Saccharose;D-(+)-Sucrose;Sugar

CHEMICAL STRUCTURE



PRODUCT USE LIMITATION

These products are intended for research use only.