

Methylene blue, $\geq 70.0\%$

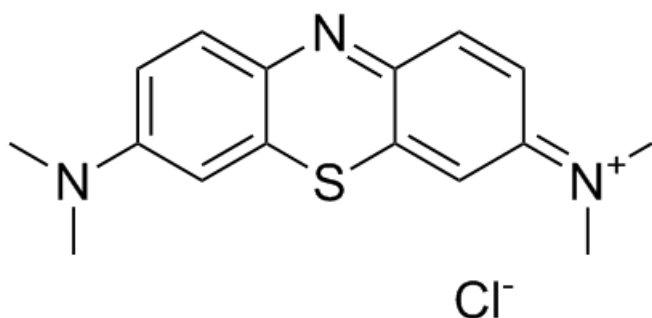
Cat# C3297

Store at room temperature and protect from light

INTRODUCTION

CAS: 61-73-4**M.W:** 319.85**Formula:** $C_{16}H_{18}ClN_3S$ **Purity:** $\geq 70\%$ **Appearance:** Powder**Solubility:** Methylene blue is soluble in water (40 g/L).**Synonym:** Chromosmon; evans blue tetrasodium salt; SWISS BLUE; BASIC BLUE 9; Evan's Blue; CI BASIC BLUE 9; Methylene Blue; MethyleneBlueGr; CBLUENO.1; CI Direct Blue 53

CHEMICAL STRUCTURE



PRODUCT USE LIMITATION

These products are intended for research use only.