

Chloramphenicol

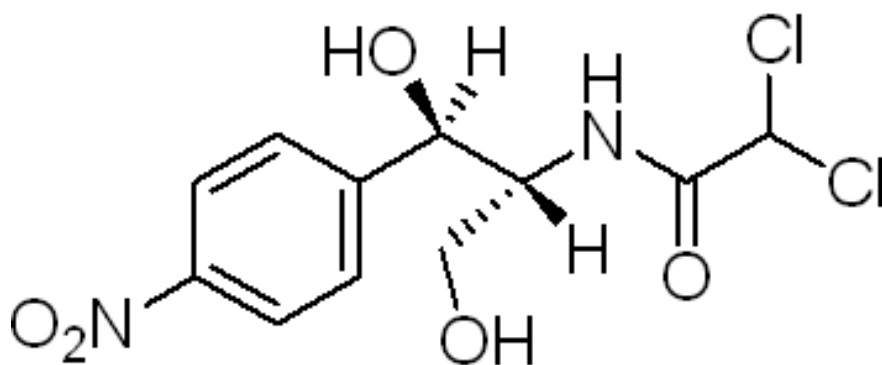
Cat# AN0001

Store at room temperature

INTRODUCTION

Grade: USP**CAS:** 56-75-7**M.W:** 323.13**Formula:** C₁₁H₁₂Cl₂N₂O₅**Purity:** 97~103%**Appearance:** White or light yellow needle-like long flake crystal or crystalline powder**Melting point:** 149~153°C**pH:** 4.5~7.5**Specific rotation:** +17~+20°**Solubility:** Slightly soluble in water (2.5mg/ml, 25°C), slightly soluble in propylene glycol (150.8mg/ml), soluble in methanol, ethanol, butanol, ethyl acetate, acetone, insoluble in ether, benzene, petroleum ether, Vegetable oil.**Synonym:** Chloramphenicol ; D(-)-threo-2,2-Dichloro-N-[β-hydroxy-α-(hydroxymethyl)-β-(4-nitrophenyl)ethyl]acetamide ; ; D(-)-threo-2-Dichloroacetamido-1-(4-nitrophenyl)-1,3-propanediol

CHEMICAL STRUCTURE



PRODUCT USE LIMITATION

These products are intended for research use only.