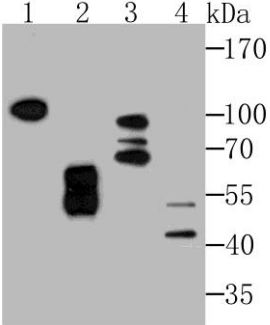


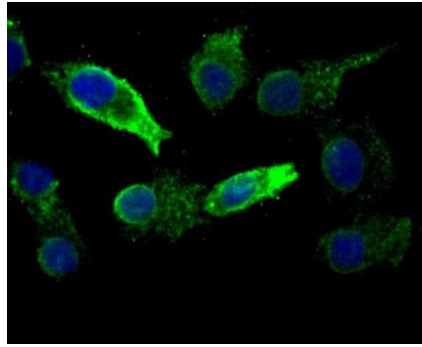
# KDEL polyclonal antibody

Cat# A6656BT

Upon receipt, store at -20°C or -80°C. Avoid repeated freeze.

## INFORMATION

<b>Product Name</b>	KDEL polyclonal antibody
<b>Cat. No.</b>	A6656BT
<b>Size</b>	50 µl, 100 µl
<b>Product type</b>	Primary Antibody
<b>Species Reactivity</b>	Hu, Ms, Rt
<b>Target</b>	KDEL polyclonal antibody detects endogenous levels of KDEL protein.
<b>Host</b>	Rabbit
<b>Clonality</b>	Polyclonal
<b>Application</b>	WB:1:500-1:2000, ICC:1:400-1:800, IHC:1:100-1:400, FC:1:50-1:100
<b>Conjugation</b>	Non-Conjugated
<b>Purification Method</b>	ProA affinity purified
<b>Storage buffer</b>	Rabbit IgG in 1*TBS (pH7.4), 1%BSA, 40%Glycerol. Preservative: 0.05% Sodium Azide.
<b>Alias</b>	KDEL receptor 1, KDELR1, ERD2.1, ER lumen protein retaining receptor 1, ERD2.1, ERD21, KDEL endoplasmic reticulum protein retention receptor 1, KDEL receptor 1, Kdelr1, Putative MAPK-activating protein PM23
<b>Image</b>	 <p>Western blot analysis of KDEL on different lysates using anti-KDEL antibody at 1/1,000 dilution.</p> <p>Positive control :</p> <p>Lane 1: Rat testis tissue        Lane 2: Human placenta tissue        Lane 3: Mouse testis tissue        Lane 4: 293</p>



ICC staining KDEL in A549 cells (green). The nuclear counter stain is DAPI (blue). Cells were fixed in paraformaldehyde, permeabilised with 0.25% Triton X100/PBS.

### **PRODUCT USE LIMITATION**

These products are intended for research use only.