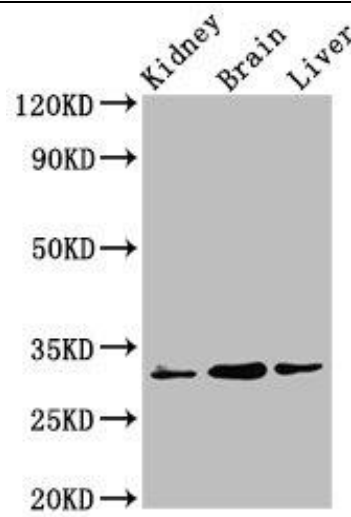


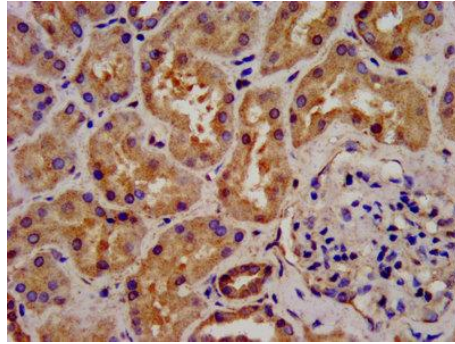
# ATAT1 Antibody

Cat# A05001PC

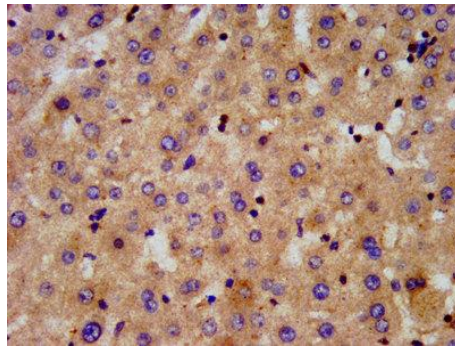
Upon receipt, store at -20°C . Avoid repeated freeze.

## INFORMATION

<b>Product Name</b>	ATAT1 Antibody
<b>Cat. No.</b>	A05001PC
<b>Size</b>	50 µl ,100 µl
<b>Product type</b>	Primary Antibody
<b>Species Reactivity</b>	Hu, Ms, Rb
<b>Immunogen</b>	Recombinant Human Alpha-tubulin N-acetyltransferase 1 protein (194-238AA)
<b>Host</b>	Rabbit
<b>Clonality</b>	Polyclonal
<b>Tested applications</b>	WB:1:500-1:5000, IHC:1:200-1:500
<b>Conjugation</b>	Non-Conjugated
<b>Purification Method</b>	>95%, Protein G purified
<b>Concentration</b>	1 mg/mL
<b>Alias</b>	Alpha-tubulin N-acetyltransferase 1 (Alpha-TAT) (Alpha-TAT1) (TAT) (EC 2.3.1.108) (Acetyltransferase mec-17 homolog), ATAT1, C6orf134 MEC17
<b>Image</b>	 <p>Western Blot</p> <p>Positive WB detected in: Rat kidney tissue, Mouse brain tissue, Mouse liver tissue</p> <p>All lanes: ATAT1 antibody at 6µg/ml</p> <p>Secondary</p> <p>Goat polyclonal to rabbit IgG at 1/50000 dilution</p>



IHC image of ATAT1 Antibody diluted at 1:300 and staining in paraffin-embedded human kidney tissue performed on a Leica Bond™ system. After dewaxing and hydration, antigen retrieval was mediated by high pressure in a citrate buffer (pH 6.0). Section was blocked with 10% normal goat serum 30min at RT. Then primary antibody (1% BSA) was incubated at 4°C overnight. The primary is detected by a biotinylated secondary antibody and visualized using an HRP conjugated SP system.



IHC image of ATAT1 Antibody diluted at 1:300 and staining in paraffin-embedded human liver tissue performed on a Leica Bond™ system. After dewaxing and hydration, antigen retrieval was mediated by high pressure in a citrate buffer (pH 6.0). Section was blocked with 10% normal goat serum 30min at RT. Then primary antibody (1% BSA) was incubated at 4°C overnight. The primary is detected by a biotinylated secondary antibody and visualized using an HRP conjugated SP system.

=

### **PRODUCT USE LIMITATION**

These products are intended for research use only.