

MPO Polyclonal Antibody

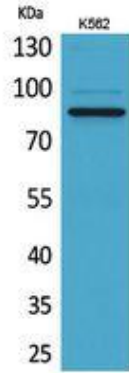
Cat# A21174PI

Upon receipt, store at -20°C . Avoid repeated freeze.

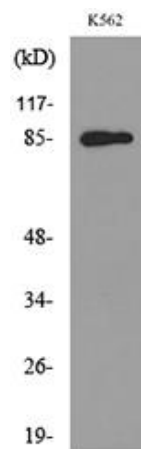
INFORMATION

Product Name	MPO Polyclonal Antibody
Cat. No.	A21174PI
Size	20 µl ,50 µl ,100 µl
Product type	Primary Antibody
Species Reactivity	Hu, Ms, Rb
Immunogen	The antiserum was produced against synthesized peptide derived from the N-terminal region of human MPO. AA range:41-90
Target	MPO Polyclonal Antibody detects endogenous levels of MPO protein.
Host	Rabbit
Clonality	Polyclonal
Tested applications	IHC-p: 100-300.Western Blot: 1/500 - 1/2000. ELISA: 1/20000. Not yet tested in other applications.
Conjugation	Non-Conjugated
Purification Method	The antibody was affinity-purified from rabbit antiserum by affinity-chromatography using epitope-specific immunogen.
Concentration	1 mg/mL
Storage buffer	Liquid in PBS containing 50% glycerol, 0.5% BSA and 0.02% sodium azide.
Alias	MPO; Myeloperoxidase

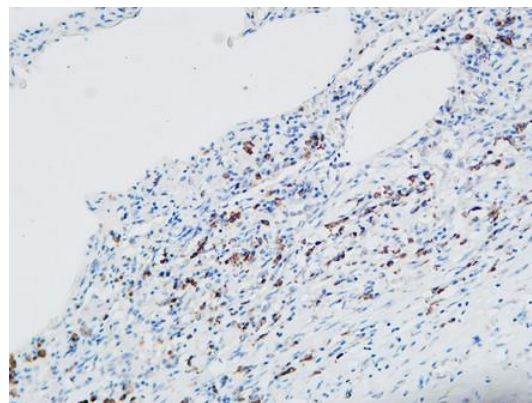
Image



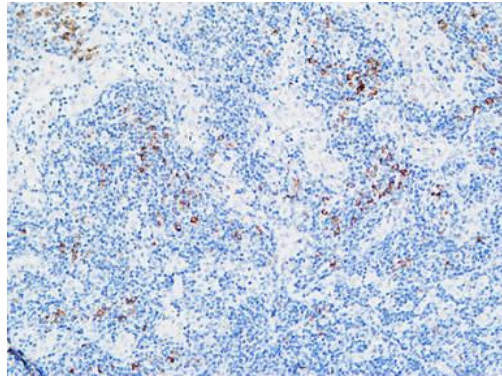
Western Blot analysis of K562 cells using MPO Polyclonal Antibody.. Secondary antibody was diluted at 1:20000



Western blot analysis of lysate from K562 cells, using MPO Antibody.



Immunohistochemical analysis of paraffin-embedded Human lung. 1, Antibody was diluted at 1:100(4°,overnight). 2, High-pressure and temperature EDTA, pH8.0 was used for antigen retrieval. 3,Secondary antibody was diluted at 1:200(room temperature, 30min).



Immunohistochemical analysis of paraffin-embedded Human lymphoma. 1, Antibody was diluted at 1:100(4°,overnight). 2, High-pressure and temperature EDTA, pH8.0 was used for antigen retrieval. 3,Secondary antibody was diluted at 1:200(room temperature, 30min).

PRODUCT USE LIMITATION

These products are intended for research use only.