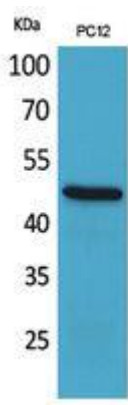


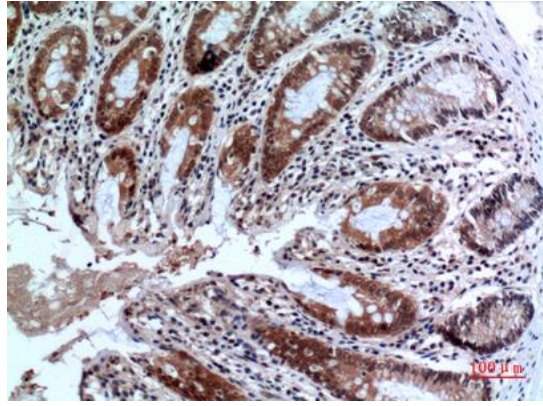
FOXP3 Polyclonal Antibody

Cat# A20827PI

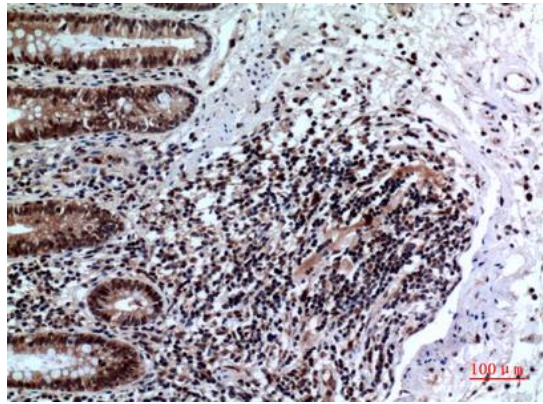
Upon receipt, store at -20°C . Avoid repeated freeze.

INFORMATION

Product Name	FOXP3 Polyclonal Antibody
Cat. No.	A20827PI
Size	20 µl ,50 µl ,100 µl
Product type	Primary Antibody
Species Reactivity	Hu, Ms, Rt
Immunogen	The antiserum was produced against synthesized peptide derived from the C-terminal region of human FOXP3. AA range:381-430
Target	FOXP3 Polyclonal Antibody detects endogenous levels of FOXP3 protein.
Host	Rabbit
Clonality	Polyclonal
Tested applications	Western Blot: 1/500 - 1/2000. IHC-p: 1/100-1/300. ELISA: 1/20000. Not yet tested in other applications.
Conjugation	Non-Conjugated
Purification Method	The antibody was affinity-purified from rabbit antiserum by affinity-chromatography using epitope-specific immunogen.
Concentration	1 mg/mL
Storage buffer	1 mg/ml, liquid in 0.01M Phosphate Buffered Saline, pH 7.2, containing 1% BSA, 50% glycerol, 0.02% Sodium Azide
Alias	FOXP3; IPEX; JM2; Forkhead box protein P3; Scurfin
Image	 <p>Western Blot analysis of PC12 cells using FOXP3 Polyclonal Antibody. Secondary antibody was diluted at 1:20000</p>



Immunohistochemical analysis of paraffin-embedded human-colon, antibody was diluted at 1:100



Immunohistochemical analysis of paraffin-embedded human-colon, antibody was diluted at 1:100

PRODUCT USE LIMITATION

These products are intended for research use only.