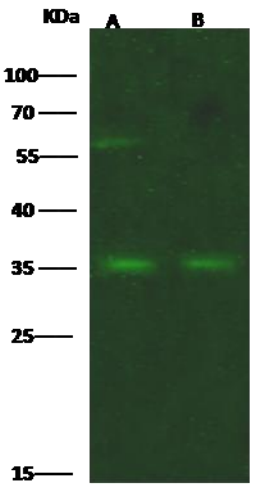


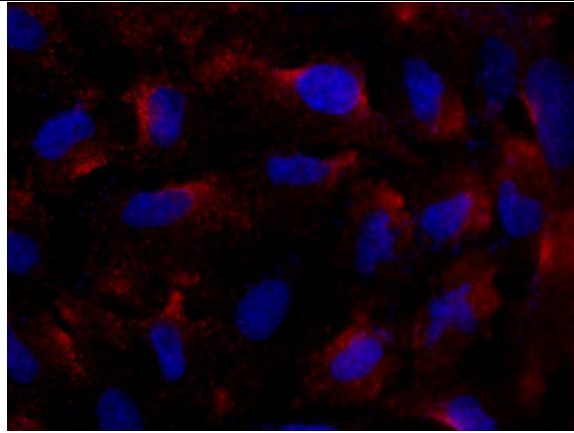
Anti-Fc epsilon RI Antibody

Cat# A0001SB

Upon receipt, store at -20°C. Avoid repeated freeze.

INFORMATION

Product Name	Anti-Fc epsilon RI Antibody
Cat. No.	A0001SB
Size	50ul, 100 ul, 200ul
Product type	Primary Antibody
Species Reactivity	Human
Immunogen	Recombinant Human FcERI / FCER1A Protein
Target	Human FcERI / FCER1A
Host	Rabbit
Clonality	Polyclonal
Application	WB: 1:500-1:1000, ICC/IF: 1:1500-1:50000, ELISA: 1:25000-1:50000
Conjugation	Non-conjugated
Purification Method	Protein A & Antigen Affinity
Formulation	0.2 µm filtered solution in PBS
Alias	Anti-FCE1A Antibody; Anti-FcERI Antibody
Image	 <p>Anti-FCER1A rabbit polyclonal antibody at 1:500 dilution.</p> <p>Lane A: A431 Membrane Lysate</p> <p>Lane B: 293T Membrane Lysate</p>



Immunofluorescence staining of FCER1A in A549 cells. Cells were fixed with 4% PFA, locked with 10% serum, and incubated with rabbit anti-human FCER1A polyclonal antibody (1:5000) at 4°C overnight. Then cells were stained with the Alexa Fluor594-conjugated Goat Anti-rabbit IgG secondary antibody (red) and counterstained with DAPI (blue). Positive staining was localized to cells membrane and cytoplasm.

PRODUCT USE LIMITATION

These products are intended for research use only.