

## AceColor™ Prestained Protein Marker (10-180 kDa)

<b>Cat. No.</b>	A1054
<b>Pack Size</b>	2*250µL/Tube, 100mL/Bottle, 1L/Bottle
<b>Appearance</b>	Dark blue solution
<b>Storage Buffer</b>	20mM Tris-H3PO4(pH7.5), 2mM EDTA, 1.5% (W/V) SDS, 15% (W/V) Glycerol, 4M Urea, 3mM DTT, 0.1% (V/V) Proclin300
<b>Quality Control</b>	Tested in SDS-PAGE and Western Blotting
<b>Shelf life</b>	Stable at -20°C for 36 months ; 4°C for 3 months ; 25°C for 4 weeks

### Information

ACE Biolabs AceColor Prestained Protein Ladder is a mixture of 10 blue-, a orange-, and a green-stained proteins (8.5 to 180 kDa) for use as size standards in protein electrophoresis (SDS-PAGE) and Western blotting. Molecular Weight: 180, 130, 95, 72(orange), 55, 43, 34, 25, 17, 8.5(green) kDa The protein ladder is supplied in a ready-to-use format for direct loading onto gels; no need to heat, reduce, or add sample buffer prior to use.

### Applications

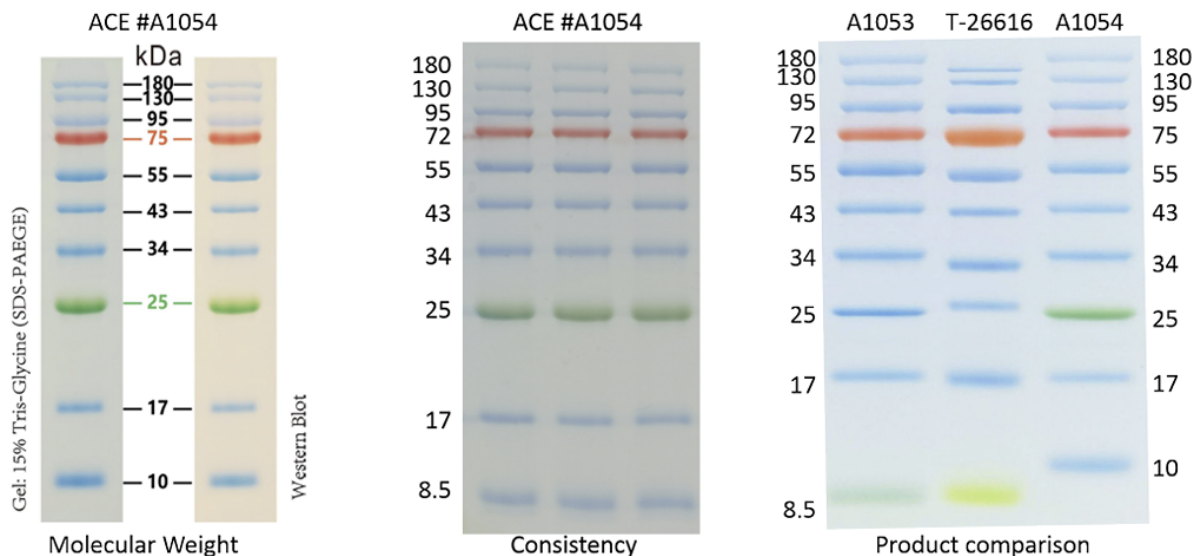
- Monitoring protein migration during SDS-PAGE.
- Monitoring protein transfer efficiency on membranes after Western blot transferring.
- Sizing estimation of proteins on SDS-PAGE and Western blots.

### Protocol

- For SDS-PAGE: Loading 3 µl or 5 µl per well for clear monitoring electrophoresis on a 15-well or 10-well mini-gel. Apply more for a thicker (> 1.5 mm) or larger gel.
- For Western blotting: Loading 1.5~2.5 µl per well for monitoring electrophoresis and general Western blot transferring efficiency. Apply more for a thicker (> 1.5 mm) or larger gel.

**Note: Do NOT heat, dilute, or add reducing agents before loading.**

### Image



### Product Use Limitation

These products are intended for research use only.