

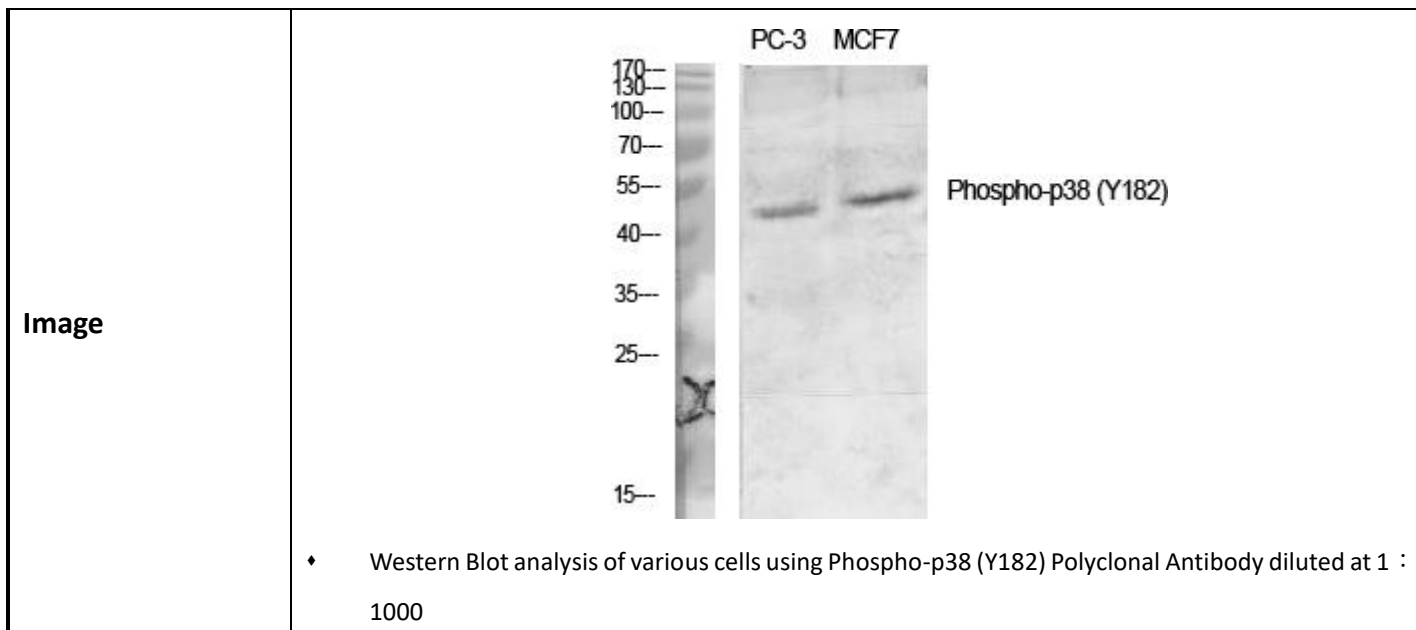
# p38 (phospho Tyr182) Polyclonal Antibody

Cat# A22169PI- 20/50/100 ug

Storage at -20 °C for 1 year

## INFORMATION

<b>Product Name</b>	p38 (phospho Tyr182) Polyclonal Antibody
<b>Cat. No.</b>	A22169PI
<b>Product type</b>	Primary antibodies
<b>Species reactivity</b>	Human, Mouse, Rat
<b>Clonality</b>	Polyclonal
<b>Host</b>	Rabbit
<b>Size</b>	20 ug/50 ug/100 ug
<b>Uniprot</b>	Human: Q16539 / Mouse: P47811 / Rat: P70618
<b>Gene name</b>	MAPK14
<b>Protein name</b>	Mitogen-activated protein kinase 14
<b>Immunogen</b>	The antiserum was produced against synthesized peptide derived from human p38 MAPK around the phosphorylation site of Tyr182. AA range:147-196
<b>Specificity</b>	Phospho-p38 (Y182) Polyclonal Antibody detects endogenous levels of p38 protein only when phosphorylated at Y182.
<b>Tested applications</b>	WB, IHC, ELISA
<b>Application</b>	WB : 1:500-1:2000/IHC : 1:100-1:300/IF : 1:10000. Not yet tested in other applications.
<b>Conjugation</b>	None
<b>Purification</b>	The antibody was affinity-purified from rabbit antiserum by affinity-chromatography using epitope-specific immunogen.
<b>Concentration</b>	1 mg/mL
<b>Molecular Weight</b>	38 kDa
<b>Stock buffer</b>	Liquid in PBS containing 50% glycerol, 0.5% BSA and 0.02% sodium azide.
<b>Storage instruction</b>	Store at -20°C for 1 year.
<b>Alias</b>	MAPK14; CSBP; CSBP1; CSBP2; CSPB1; MXI2; SAPK2A; Mitogen-activated protein kinase 14; MAP kinase 14; MAPK 14; Cytokine suppressive anti-inflammatory drug-binding protein; CSAID-binding protein; CSBP; MAP kinase MXI2; MAX-interacting protein



### **PRODUCT USE LIMITATION**

These products are intended for research use only.