

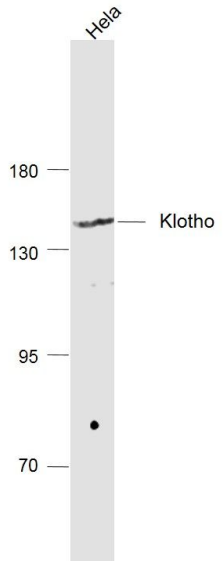
Rabbit Anti-Klotho antibody

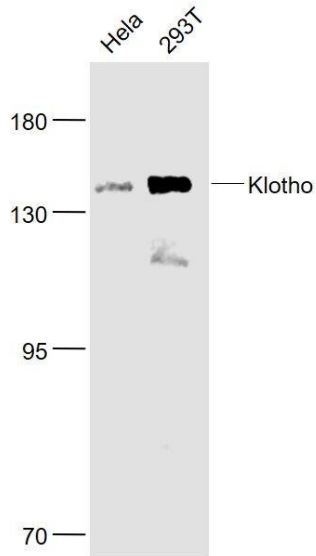
Cat# A440104– 20/50/100 ug

Storage at -20 °C

INFORMATION

Product Name	Rabbit Anti-Klotho antibody
Cat. No.	A440104
Product type	Primary antibodies
Species reactivity	Human, Mouse, Dog, Pig, Cow, Horse, Rabbit
Clonality	polyclonal
Host	Rabbit
Size	20 ug/50 ug/100 ug
Uniprot	Q9UEF7
Isotype	IgG
Immunogen	KLH conjugated synthetic peptide derived from human Klotho:401-500/1012 <Extracellular>
Concentration	1 mg/ml
Formula	Liquid
Tested applications	WB, ELISA, IHC-P, IHC-F, IF
Application	WB : 1:200-1:1000 ELISA : 1:500-1:1000 IHC-P : 1:100-1:500 IHC-F : 1:100-1:500 IF : 1:100-1:500
Conjugation	None
Purification	Affinity purified by Protein A
Molecular Weight	113 kDa
Stock buffer	0.01M TBS(pH7.4) with 1% BSA, 0.03% Proclin300 and 50% Glycerol.
Storage instruction	Shipped at 4°C . Store at -20 °C for one year. Avoid repeated freeze/thaw cycles.
Alias	KL antibody KLOT_HUMAN; Klotho peptide.
Subunit	Belongs to the glycosyl hydrolase 1 family. Klotho subfamily.
Subcellular location	Isoform 1: Cell membrane; Single-pass type I membrane protein. Note=Isoform 1 shedding leads to a soluble peptide. Isoform 2: Secreted.

	Klotho peptide: Secreted.
Expression	Present in cortical renal tubules (at protein level). Soluble peptide is present in serum and cerebrospinal fluid. Expressed in kidney, placenta, small intestine and prostate. Down-regulated in renal cell carcinomas, hepatocellular carcinomas, and in chronic renal failure kidney.hepatocellular carcinomas, and in chronic renal failure kidney.
Post-translational modifications	N-glycosylated.
Background	May have weak glycosidase activity towards glucuronylated steroids. However, it lacks essential active site Glu residues at positions 239 and 872, suggesting it may be inactive as a glycosidase in vivo. May be involved in the regulation of calcium and phosphorus homeostasis by inhibiting the synthesis of active vitamin D (By similarity). Essential factor for the specific interaction between FGF23 and FGFR1. The Klotho peptide generated by cleavage of the membrane-bound isoform may be an anti-aging circulating hormone which would extend life span by inhibiting insulin/IGF1 signaling
Function	May have weak glycosidase activity towards glucuronylated steroids. However, it lacks essential active site Glu residues at positions 239 and 872, suggesting it may be inactive as a glycosidase in vivo. May be involved in the regulation of calcium and phosphorus homeostasis by inhibiting the synthesis of active vitamin D (By similarity). Essential factor for the specific interaction between FGF23 and FGFR1 (By similarity). The Klotho peptide generated by cleavage of the membrane-bound isoform may be an anti-aging circulating hormone which would extend life span by inhibiting insulin/IGF1 signaling (By similarity).
Image	 <ul style="list-style-type: none"> ◆ Sample: ◆ HeLa (Human) Cell Lysate at 30 ug ◆ Primary: Anti-Klotho (bs-2925R) at 1/1000 dilution ◆ Secondary: IRDye800CW Goat Anti-Rabbit IgG at 1/20000 dilution ◆ Predicted band size: 113 kD ◆ Observed band size: 135 kD



Sample:

HeLa (Human) Cell Lysate at 30 ug

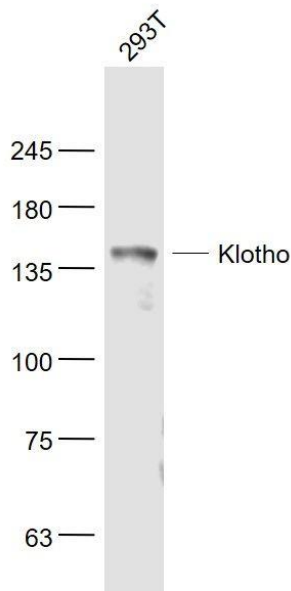
293T (Human) Cell Lysate at 30 ug

Primary: Anti- Klotho (bs-2925R) at 1/500 dilution

Secondary: IRDye800CW Goat Anti-Rabbit IgG at 1/20000 dilution

Predicted band size: 135 kD

Observed band size: 135 kD



Sample:

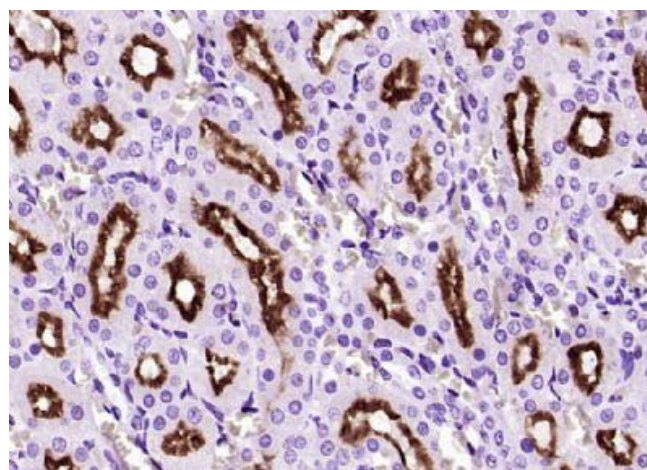
293T(Human) Cell Lysate at 30 ug

Primary: Anti- Klotho (bs-2925R) at 1/100 dilution

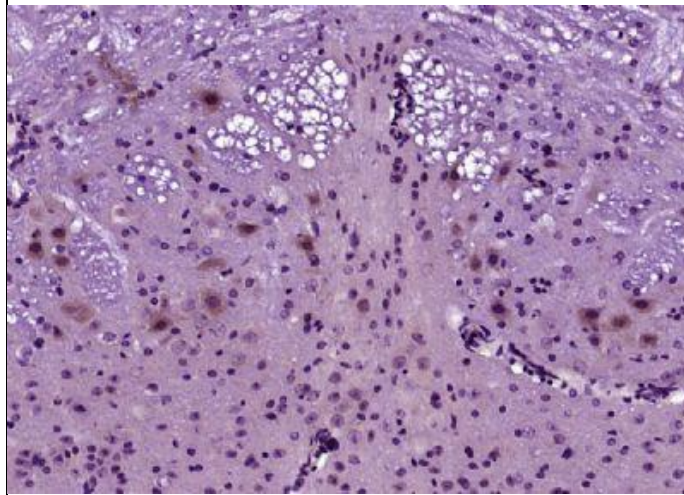
Secondary: IRDye800CW Goat Anti-Rabbit IgG at 1/20000 dilution

Predicted band size: 113 kD

Observed band size: 148 kD

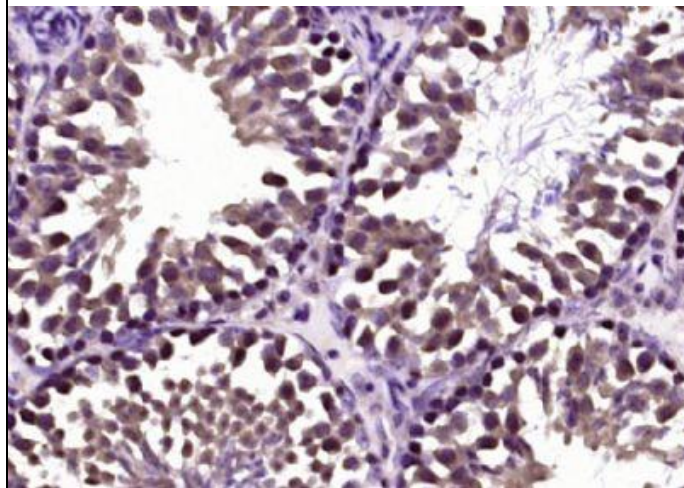


Paraformaldehyde-fixed, paraffin embedded (Mouse kidney); Antigen retrieval by boiling in sodium citrate buffer (pH6.0) for 15min; Block endogenous peroxidase by 3% hydrogen peroxide for 20 minutes; Blocking buffer (normal goat serum) at 37°C for 30min; Antibody incubation with (Klotho) Polyclonal Antibody, Unconjugated (bs-2925R) at 1:400 overnight at 4°C, followed by operating according to SP Kit(Rabbit) (sp-0023) instructions and DAB staining.



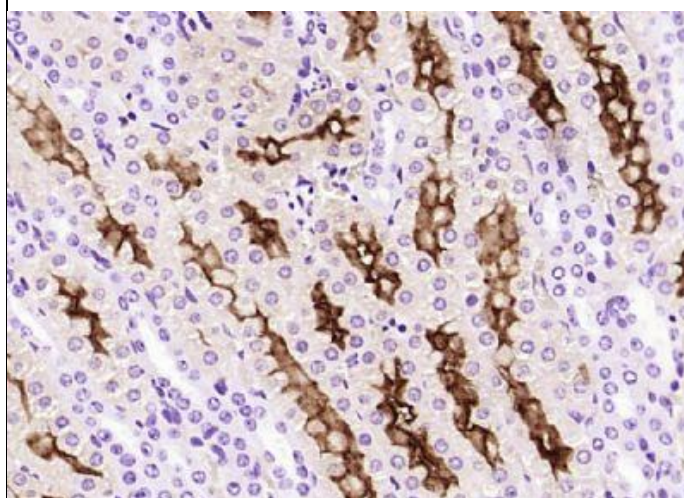
Paraformaldehyde-fixed, paraffin embedded (Mouse brain); Antigen retrieval by boiling in sodium citrate buffer (pH6.0) for 15min; Block endogenous peroxidase by 3% hydrogen peroxide for 20 minutes; Blocking buffer (normal goat serum) at 37°C for 30min; Antibody incubation with (Klotho) Polyclonal Antibody,

Unconjugated (bs-2925R) at 1:400 overnight at 4°C, followed by operating according to SP Kit(Rabbit) (sp-0023) instructions and DAB staining.



Paraformaldehyde-fixed, paraffin embedded (Mouse testis); Antigen retrieval by boiling in sodium citrate buffer (pH6.0) for 15min; Block endogenous peroxidase by 3% hydrogen peroxide for 20 minutes; Blocking buffer (normal goat serum) at 37°C for 30min; Antibody incubation with (Klotho) Polyclonal Antibody,

Unconjugated (bs-2925R) at 1:400 overnight at 4°C, followed by operating according to SP Kit(Rabbit) (sp-0023) instructions and DAB staining.



Paraformaldehyde-fixed, paraffin embedded (Rat kidney); Antigen retrieval by boiling in sodium citrate buffer (pH6.0) for 15min; Block endogenous peroxidase by 3% hydrogen peroxide for 20 minutes; Blocking buffer (normal goat serum) at 37°C for 30min; Antibody incubation with (Klotho) Polyclonal Antibody, Unconjugated (bs-2925R) at

1:400 overnight at 4°C, followed by operating according to SP Kit(Rabbit) (sp-0023)

	instructions and DAB staining.
--	--------------------------------

PRODUCT USE LIMITATION

These products are intended for research use only.