



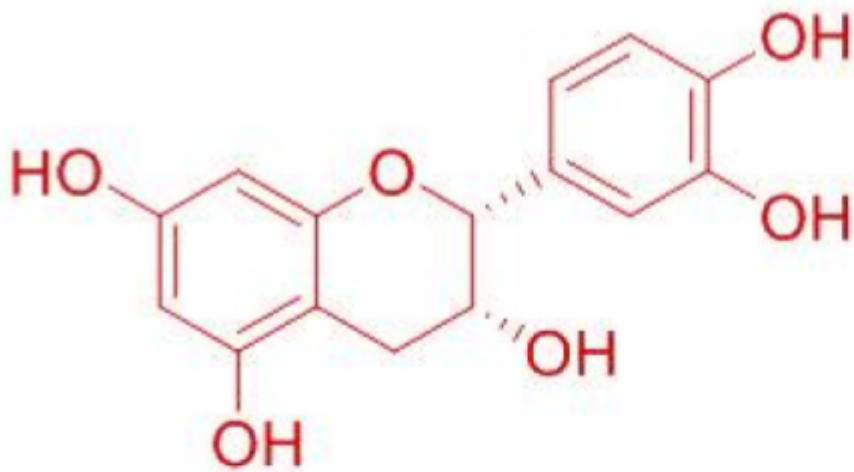
(-)-Epicatechin

Cat# C011162S

store at at 2-8°C.

INFORMATION

Size	20mg
Applications	Chemicals>Natural Products
M.F	C15H14O6
Physical Description	Powder
Purity	>=98%
M.W	290.27
Synonyms	L-Epicatechin; 2-(3,4-Dihydroxyphenyl)-3,4-dihydro-2H-1-benzopyran-3,5,7-triol.
Storage Stability	2-8°C, Protected from air and light, refrigerate or freeze.
Solvent	Chloroform, Dichloromethane, Ethyl Acetate, DMSO, Acetone, etc.
Source	The wood of <i>Acacia catechu</i> (L.F.) Willd.
HPLC Method	Mobile phase: Methanol - 0.1%Phosphoric acid H2O, gradient elution; Flow rate: 1.0 ml/min;Column temperature: Room Temperature;The wave length of determination: 280 nm.
Intended Use	1. Reference standards 2. Pharmacological research 3. Synthetic precursor compounds 4. Intermediates & Fine Chemicals 5. Aromatics 6. Others
Biological Activity or Inhibitors	1)Plant-derived flavanol (-)epicatechin enhances angiogenesis and retention of spatial memory in mice. 2)Oral administration of chemically pure (-)-epicatechin to humans closely emulates acute vascular effects of flavanol-rich cocoa, suggests that (-)-epicatechin mediates beneficial. 3)effects of flavanol-rich cocoa on vascular function in humans. Epicatechin exerts antioxidative effects, it has protective effect on lipid peroxidation in phospholipid bilayers. 4)Epicatechin has antinociceptive effect, it may be effective to treat nociceptive hypersensitivity in diabetic patients. 5)(-)-Epicatechin has the potential to increase CREB-regulated gene expression and increase GluR2 levels and thus modulate neurotransmission, plasticity and synaptogenesis.



PRODUCT USE LIMITATION