



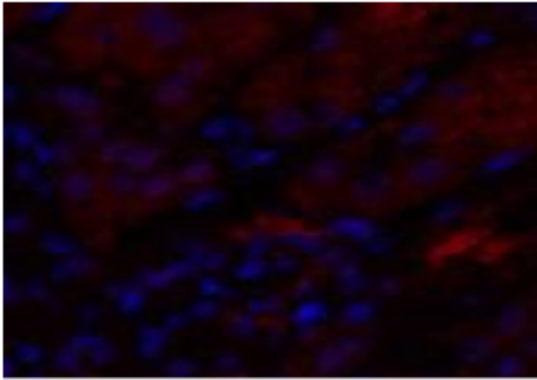
Human IL-8 Polyclonal Antibody

Cat# A340007

store at Store at -20°C. Avoid freeze / thaw cycles.

INFORMATION

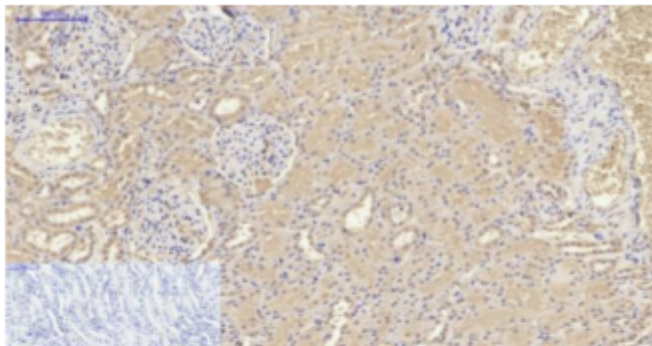
Size	100 ug
Applications	Antibody
Host	Rabbit
Note	Centrifuge before opening to ensure complete recovery of vial contents.
Synonyms	IL8,CXCL8,Interleukin-8,IL-8,C-X-C motif chemokine 8,Emoctakin,Granulocyte chemotactic protein 1,GCP-1,Monocyte-derived neutrophil chemotactic factor,MDNCF,Monocyte-derived neutrophil-activating peptide,MONAP,Neutrophilactivating protein 1,NAP-1,Protein 3-10C,T-cell chemotactic factor.
Buffer	PBS with 0.02% sodium azide,0.5% BSA and 50% glycerol pH 7.4.
Purify	Affinity purification
Dilution	WB 1:500-1:2000, IHC 1:100-1:300, IF 1:100-1:300, ELISA 1:20000
Background	IL-8 is a chemotactic factor that attracts neutrophils, basophils, and Tcells, but not monocytes. It is also involved in neutrophil activation. It is released from several cell types in response to an inflammatory stimulus. IL-8(6-77) has a 5-10-fold higher activity on neutrophil activation, IL-8(5-77) has increased activity on neutrophil activation and IL-8(7-77) has a higher affinity to receptors CXCR1 and CXCR2 as compared to IL-8(1-77), respectively.



Immunofluorescence analysis of Human kidney tissue using IL8 Polyclonal Antibody at dilution of 1:200.

PRODUCT USE LIMITATION

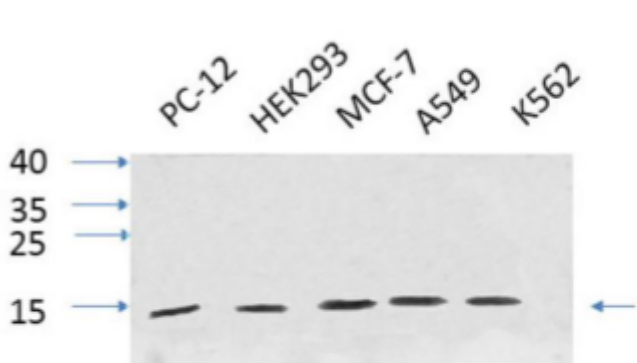
These products are intended for research use only.



Immunohistochemistry of paraffinembedded Human kidney tissue using IL8 Polyclonal Antibody at dilution of 1:200.

PRODUCT USE LIMITATION

These products are intended for research use only.



Western Blot analysis of various cells using IL8 Polyclonal Antibody at dilution of 1:1000.

PRODUCT USE LIMITATION

These products are intended for research use only.