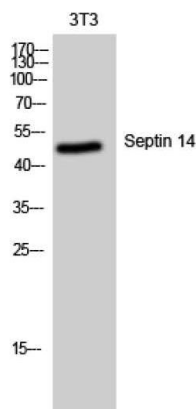


Septin 14 Polyclonal Antibody

Cat# A26716PI

INFORMATION

Catalog Number	A26716PI
Size	20µg/50µg/100µg
Source	Rabbit
Immunogen	The antiserum was produced against synthesized peptide derived from human SEPT14.AA range:341-390
Specificity	Septin 14 Polyclonal Antibody detects endogenous levels of Septin 14 protein.
Formulation	Liquid in PBS containing 50% glycerol, 0.5% BSA and 0.02% sodium azide.
Dilution	Western Blot: 1/500 - 1/2000. ELISA: 1/40000. Not yet tested in other applications.
Purification	The antibody was affinity-purified from rabbit antiserum by affinity-chromatography using epitope-specific immunogen.
Storage stability	-20°C/1 year
Molecular Weight	50KD



Western Blot analysis of 3T3 cells using Septin 14 Polyclonal Antibody.