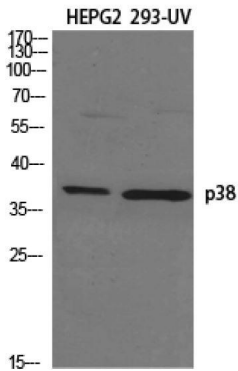


p38 Polyclonal Antibody

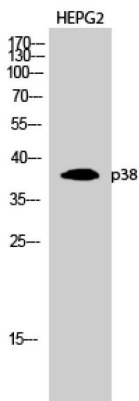
 Cat# A20631PI
 store at -20°C

INFORMATION

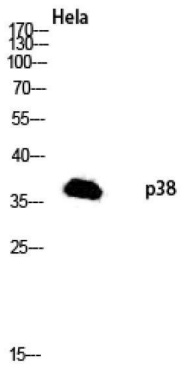
Size	100 µl
Immunogen	The antiserum was produced against synthesized peptide derived from human p38 MAPK. AA range:151-200
Reactivity	Human,Mouse,Rat
Applications	WB,IHC-p,ELISA
Immunogen	Synt
Specificity	p38 Polyclonal Antibody detects endogenous levels of p38 protein.
Formulation	Liquid in PBS containing 50% glycerol, 0.5% BSA and 0.02% sodium azide.
Dilution	WB: 1:5
Source	Rabbit
Purification	The antibody was affinity-purified from rabbit antiserum by affinity-chromatography using epitope-specific immunogen.
Storage Stability	-20°C/1 year
Concentration	1 mg/ml
Molecular Weight	38KD



Western Blot analysis of various cells using p38 Polyclonal Antibody diluted at 1 : 3000.



Western Blot analysis of HEPG2 cells using p38 Polyclonal Antibody diluted at 1 : 3000.



Western blot analysis of HeLa lysis using p38 antibody.
Antibody was diluted at 1:3000

