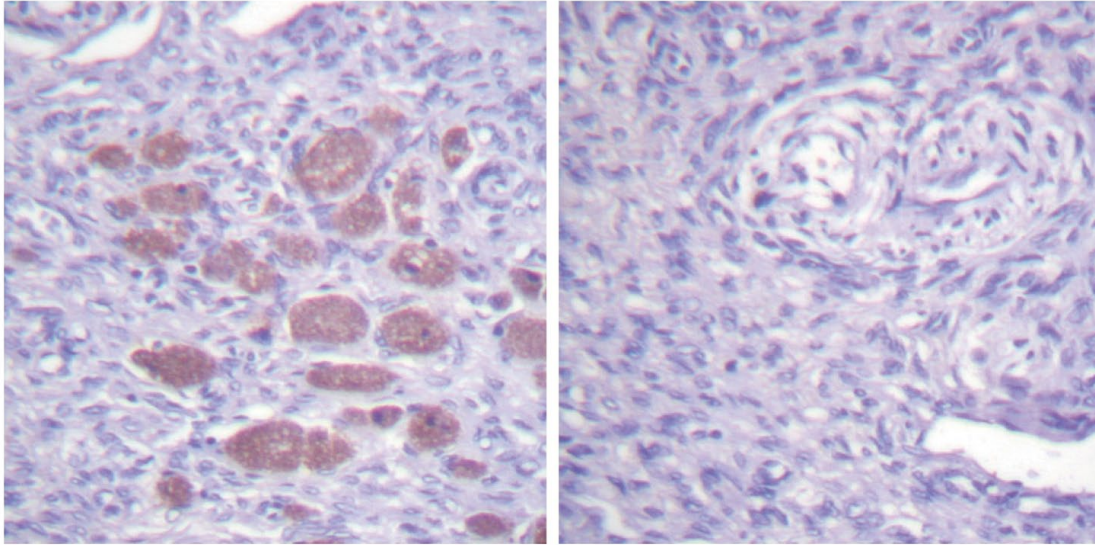


# p47-phox Polyclonal Antibody

 Cat# A140115  
 store at -20°C

## INFORMATION

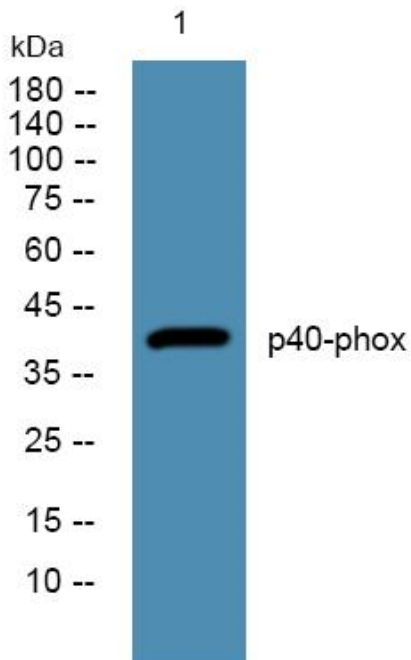
Size	50ug/100ug
Host/Isotope	Rabbit
Reactivity	Human,Mouse
Applications	IHC-p,IF(paraffin section),WB,ELISA
Immunogen	The antiserum was produced against synthesized peptide derived from human p40 phox. AA range:120-169
Specificity	p40-phox Polyclonal Antibody detects endogenous levels of p40-phox protein.
Formulation	Liquid in PBS containing 50% glycerol, 0.5% BSA and 0.02% sodium azide.
Dilution	WB 1:500-2000 Immunohistochemistry: 1/100 - 1/300. ELISA: 1/10000. Not yet tested in other applications.
Purification	The antibody was affinity-purified from rabbit antiserum by affinitychromatography using epitope-specific immunogen.
Storage Stability	-20°C/1 year
Background	<p>neutrophil cytosolic factor 4(NCF4) Homo sapiens The protein encoded by this gene is a cytosolic regulatory component of the superoxide-producing phagocyte NADPH-oxidase, a multicomponent enzyme system important for host defense.</p> <p>This protein is preferentially expressed in cells of myeloid lineage. It interacts primarily with neutrophil cytosolic factor 2 (NCF2/p67-phox) to form a complex with neutrophil cytosolic factor 1 (NCF1/p47-phox), which further interacts with the small G protein RAC1 and translocates to the membrane upon cell stimulation. This complex then activates flavocytochrome b, the membraneintegrated catalytic core of the enzyme system. The PX domain of this protein can bind phospholipid products of the PI(3) kinase, which suggests its role in PI(3) kinase-mediated signaling events. The phosphorylation of this protein was found to negatively regulate the enzyme activity. Alternatively spliced transcript variants encoding d</p>



Immunohistochemistry analysis of paraffin-embedded human ovary tissue, using p40 phox Antibody. The picture on the right is blocked with the synthesized peptide.

**PRODUCT USE LIMITATION**

These products are intended for research use only.



Western blot analysis of lysates from K562 cells, primary antibody was diluted at 1:1000, 4° over night

**PRODUCT USE LIMITATION**

These products are intended for research use only.